

# PERSONAL NAVIGATOR



Sunrise: 7:13 a.m. Sunset: 7:40 p.m.  
Evening Attire: Cruise Casual  
All Aboard: 3:30 p.m.

Saturday: Partly Sunny High: 76°F/24°C  
Sunday: Partly Sunny High: 77°F/25°C

SATURDAY, MARCH 31, 2012

PORT CANAVERAL, FLORIDA

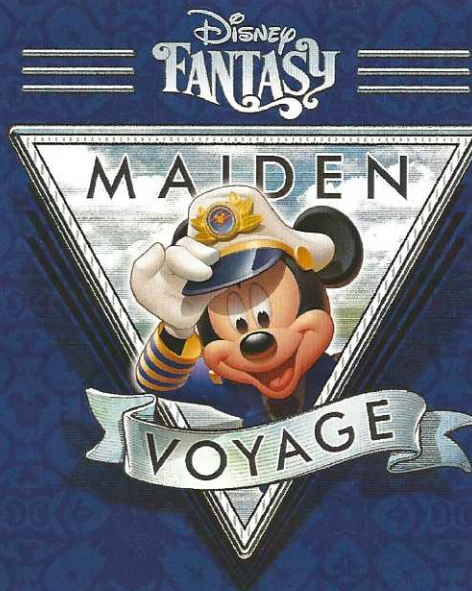
**JUSTIN WILLMAN**  
THE COOLEST VARIETY SHOW  
ON THE HIGH SEAS!

6:15 P.M.  
& 8:30 P.M.

WALT DISNEY  
THEATRE  
DECKS 3 & 4, FORWARD



Assistance available at the entrance on Deck 3 to the Walt Disney Theatre 30 minutes prior to show time.



MARCH 31 - APRIL 7, 2012

GRAND CAYMAN • COZUMEL • COSTA MAYA • CASTAWAY CAY

## Welcome Aboard!

### Your Stateroom & Luggage

Staterooms will be ready at 12:00 p.m. Stateroom hosts will deliver luggage throughout the day until 5:30 p.m.

### Staterooms with Bunk Beds

Bunk beds are recessed into the ceiling and will be prepared during evening turndown service by your Stateroom Host/ess.

### To Change Dining Assignment

Requests for different seating times will be taken today:

- 12:00 - 3:15 p.m. - Royal Court
- 3:15 - 5:00 p.m. - Please dial 7-1831/ 7-1832/ 7-1833

### Palo & Remy Dining Reservations

Are required and will be taken on a first come basis today at:

- 11:00 a.m. - 2:30 p.m. Palo & Remy
- 3:15 - 5:00 p.m. Please leave voice mail at 7-9735 for Palo or 7-9734 for Remy.

### Dinner

- 5:45 p.m. - First seating
- 8:15 p.m. - Second seating

Please check your dining tickets for details of your dining rotation, and bring them to your specific dining location. There is no need to wait in line prior to dinner. Dining Rooms open at designated seating times and your table is reserved each night of your cruise.

**SAILING AWAY**

It's time to go Sailing Away on our Maiden Voyage! Join Mickey and Minnie, along with Tinker Bell and the rest of the gang, as they welcome you aboard the Disney Fantasy.

4:15 p.m.  
Deck Stage,  
Deck 11 Midship

## Don't Miss:

### Walking Ship Tour

1:00 & 2:00 p.m., Preludes, Deck 3, Forward  
Join your Cruise Staff as they give you tips and help you navigate the Disney Fantasy's entertainment venues.

### Mirror, Mirror Game Show

7:30 & 10:15 p.m. D Lounge, Deck 4, Midship  
Join the Magic Mirror and Dopey in the fairest game show of them all, Mirror, Mirror. There's trivia, singing and even a relay race. Hi Ho, Hi Ho, its off to play we go!

### Family Karaoke

9:30 & 10:45 p.m., D Lounge, Deck 4, Midship  
Join your Cruise Staff in D Lounge tonight and sing along to your favorite song - fun for everyone.

### Adult Cabaret: Paul Boland

10:45 p.m., The Tube (18+), Deck 4, Aft  
Featuring the Music & Comedy of Paul Boland, as he entertains you in this adult Cabaret-Style show.

### Bring the Tube Alive with Guest DJ Z

11:15 p.m., The Tube (18+), Deck 4, Aft  
Hold onto the handrails as Guest DJ Z brings The Tube alive!



## TIME ZONE CHANGE

Remember to turn your clocks **BACK 1 HOUR** upon retiring on **SATURDAY** evening, or first thing **SUNDAY** morning.

## DINNER MENU

Animator's Palate: Pacific Rim Cuisine  
Enchanted Garden: Continental Market  
Royal Court: French Dinner

## DRINK OF THE DAY

Paradise (Alcoholic)  
Espresso Chiller (Non Alcoholic)

## IMPORTANT NUMBERS

Fire/Security: 7-3001  
Medical Emergency: 7-3000  
Health Center: 7-1923

# FAMILY ACTIVITY HIGHLIGHTS

## MIRROR, MIRROR GAME SHOW

*D Lounge, Deck 4, Midship - 7:30 & 10:15 p.m.*

Join the Magic Mirror and Dopey in the fairest game show of them all, Mirror, Mirror. There's trivia, singing and even a relay race. Hi Ho, Hi Ho, its off to play we go!

## FAMILY KARAOKE

*D Lounge, Deck 4, Midship - 9:30 & 10:45 p.m.*

Join your Cruise Staff in D Lounge tonight and sing along to your favorite song - fun for everyone.

## Cruise Highlights

<b>Saturday</b>	<b>PORT CANAVERAL</b> <i>All Aboard: 3:30 p.m.</i> <i>Attire: Cruise Casual</i>	<b>JUSTIN WILLMAN</b> <i>Walt Disney Theatre</i> 6:15 & 8:30 p.m.
<b>Sunday</b>	<b>DAY AT SEA</b> <i>Attire: Formal</i>	<b>DISNEY'S ALADDIN</b> <i>Walt Disney Theatre</i> 6:15 & 8:30 p.m.
<b>Monday</b>	<b>GRAND CAYMAN</b> <i>First Tender: Approx. 10:45 a.m.</i> <i>Last Tender: 4:00 p.m.</i> <i>Attire: Cruise Casual</i>	<b>LARRY THE CABLE GUY</b> <i>Walt Disney Theatre</i> 6:15 & 8:30 p.m. Suitable For Guests 13 & Older
<b>Tuesday</b>	<b>COZUMEL</b> <i>All Ashore: Approx. 9:30 a.m.</i> <i>All Aboard: 6:15 p.m.</i> <i>Attire: Pirate/ Cruise Casual</i>	<b>JOHN CARTER</b>  <b>DOLBY 3D</b> <i>Walt Disney Theatre</i> 5:15 & 8:15 p.m.
<b>Wednesday</b>	<b>COSTA MAYA</b> <i>All Ashore: Approx. 8:00 a.m.</i> <i>All Aboard: 2:30 p.m.</i> <i>Attire: Cruise Casual</i>	<b>DISNEY WISHES</b> <i>Walt Disney Theatre</i> 6:15 & 8:30 p.m.
<b>Thursday</b>	<b>DAY AT SEA</b> <i>Attire: Semi-Formal</i>	<b>STEPHEN SCHWARTZ &amp; LEA SALONGA</b> <i>Walt Disney Theatre</i> 6:15 & 8:30 p.m.
<b>Friday</b>	<b>DISNEY'S CASTAWAY CAY</b> <i>All Ashore: Approx. 9:30 a.m.</i> <i>All Aboard: 4:30 p.m.</i> <i>Attire: Cruise Casual</i>	<b>DISNEY'S BELIEVE</b> <i>Walt Disney Theatre</i> 6:15 & 8:30 p.m.

Schedule subject to Change



# ADULT ACTIVITY HIGHLIGHTS



## FITNESS CLASSES

*Senses Spa and Salon has a variety of seminars and fitness class available throughout the cruise.*

## BEVERAGE SEMINARS

*Your Beverage team has a host of tastings and seminars to entertain and educate you. Stop by Guest Services, Deck 3 Midship to pre-book those experiences (nominal fee applies).*

Wine Tasting - Martini Tasting - Champagne Tasting  
Tequila Tasting and Mixology

## LIVE MUSIC WITH FINE WHINES

*La Piazza, Deck 4, Aft - 7:30, 9:45 & 10:45 p.m.*

Join our Jazz Duo, Fine Whines as they play live in La Piazza for your listening pleasure.

## CLUB 18\*21 ICE BREAKERS

*The Tube, Deck 4, Aft - 10:00 p.m.*

Club 18\*21 is an exclusive gathering for young adult guests. Come meet fellow cruisers and learn about the great activities the Disney Fantasy has to offer to help create the perfect cruise experience.



## POP!

*The Tube, Deck 4, Aft - 10:15 p.m.*

Have you been told you are full of useless information about pop culture? If the answer is "Yes", then you have what it takes to play the high energy game show all about the world of Pop!

## ADULT CABARET: PAUL BOLAND

*The Tube, Deck 4, Aft - 10:45 p.m.*

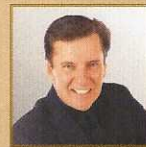
Featuring the Music & Comedy of Paul Boland, as he entertains you in this adult Cabaret-Style show.

## FEATURED CABARET ACTS THIS VOYAGE



### COMEDY AND MAGIC OF JUSTIN WILLMAN

Justin Willman has quickly become one of the busiest TV-personalities and live entertainers in America. His Tricked Out Tour takes him around the globe with a hugely popular one-man comedy and magic live show. Earlier this year he appeared in the Showtime documentary Make Believe, guest-starred on the hit CBS show The Defenders, and made a cameo on the long-running Disney sitcom The Suite Life on Deck.



### MUSIC AND COMEDY OF PAUL BOLAND

Comedy impressionist Paul Boland doesn't just walk onstage alone, he brings with him his incredible repertoire of over 200 voices. Paul electrifies audiences of all ages with a diverse array of celebrity impersonations that range from yesterday to today.



### MUSIC & COMEDY OF BUCKETS N BOARDS

Buckets N Boards is a 2-man Comedy Percussion Show that is made up of co-creators Matthew Levingston and Gareth Sever. Their rhythm and comedy show is full of amazing percussion, ridiculous songs, inventive instrumentation, spectacular tap dancing, an incredible variety of musical talents, and good clean fun!



### COMEDY & VENTRILOQUISM OF TAYLOR MASON

Combining music, ventriloquism, comedy and audience participation sounds like a musical theater production, but it's really one man! Taylor Mason makes people of all ages laugh and laugh hard. His quick wit, flawless delivery & polished material make him a hit with Guests of all ages.



### THE PHYSICAL COMEDY OF MICHAEL HOLLY

Michael Holly began his performing days on the cobbled streets of Fantasyland at Disneyland in 1985 and since then has been the comedy star of a dozen Las Vegas Shows including Vegas-The Show at Planet Hollywood, V-The Ultimate Variety Show at the Venetian, Les Folies Bergere at The Tropicana and has the highest rated one man comedy variety show in Las Vegas, his own, "Michael Holly's Off The Wall Comedy Hour".

# YOUTH ACTIVITIES HIGHLIGHTS



Deck 5 Midship (7-5864) 12:00 p.m. - 11:00 p.m.  
 Infants and Toddlers can enjoy toys and activities at It's A Small World Nursery. Reservations are first come, first served so please stop by!



Deck 5 Midship (7-1440)  
 12:00 p.m. - 12:00 Mid.



Deck 5 Midship (7-1445)  
 12:00 p.m. - 12:00 Mid.

## REGISTRATION FOR 3-12 YEAR OLDS

Meet the Youth Activities Team in the Oceaneer Lab and Oceaneer Club, complete your registration & learn all about the Themed Experiences this cruise!



**CLUBHOUSE SERIES** - The Clubhouse Themed Experiences focus on movement and feature content which appeals to younger children. *Recommended 7 yrs & younger.*



**STORYBOOK SERIES** - The Storybook Series Themed Experiences are designed with a strong connection to the Disney classic stories.



**JUMP UP! SERIES** - The Let's Move! Themed Experiences will include large ground games & movement-oriented activities.



**CREATE & INVENT SERIES** - The Create & Invent Themed Experiences will have a tactile focus allowing children to create and admire their work.



**IN THE SPOTLIGHT SERIES** - The In The Spotlight Themed Experiences focus on children's stage presence with lots of activities and enthusiasm. *Recommended 7 yrs & older.*



**SOLVE IT! SERIES** - The Solve It! Themed Experiences are less active, but will challenge children with problem/solutions-based activities. *Recommended 7 yrs & older.*



**OUT AND ABOUT SERIES** - Set outside secured Youth Activities spaces, very active, appealing to Tweens. Recommended 8 - 14 years

### DINE & PLAY

A convenience for families dining at 8:15 p.m., our Youth Activities Counselors will be available at 9:15 p.m. at the entrance of Royal Court, Enchanted Garden and Animator's Palate dining rooms to bring registered children to join the fun in the Youth Activity areas.

### YOUTH ACTIVITIES OPEN HOUSE

Open House is an opportunity for all to come and participate in a variety of exciting activities and free time in the Oceaneer Club, Lab, Edge and Vibe throughout the cruise. During these times secured programming will still be offered in the other venue for those looking to check their children into care.

Deck 13 Midship (41-14426) - 12:00 p.m. - 12:00 a.m.

### EDGE (11- 14 YEAR OLDS)

Edge is an interactive play space play video games, watch television and participate in arts and crafts with kids their own age.

### TAKING IT TO THE EDGE

10:00 p.m. Edge

Come and meet your counselors and fellow tweens as we get to know each other and what there is for you to do all week long in Edge.



Entrance on Deck 4 Forward (7- 9418)  
 12:00 p.m. - 1:00 a.m.

### THE DOWNLOAD (14-17 YEAR OLDS)

10:30 p.m. Vibe

Come up to Vibe and help plan all the fun activities you will be doing this cruise with your new friends! We'll use our very own Teens-only intranet database to decide how our week will go!

# BUENA VISTA THEATRE

## Feature Movies this Voyage

### SATURDAY - PORT CANAVERAL

5:30 p.m.	G	Cars 2	<input checked="" type="checkbox"/> DOLBY.3D
8:00 p.m.	G	Cars 2	<input checked="" type="checkbox"/> DOLBY.3D
10:30 p.m.	PG-13	Real Steel	

### SUNDAY - DAY AT SEA

9:00 a.m.	PG	The Muppets	
3:30 p.m.	PG	Tangled	<input checked="" type="checkbox"/> DOLBY.3D
5:45 p.m.	PG	Disney nature: African Cats	
8:15 p.m.	PG	Disney nature: African Cats	
10:15 p.m.	PG-13	War Horse	

### MONDAY - GRAND CAYMAN

2:30 p.m.	PG-13	War Horse	
5:45 p.m.	PG	The Muppets	
8:15 p.m.	PG	The Muppets	
10:30 p.m.	PG-13	The Help	

### TUESDAY - COZUMEL

12:00 p.m.	PG	Disney nature: African Cats	
2:00 p.m.	PG-13	The Help	
5:15 p.m.	PG-13	Real Steel	
8:00 p.m.	PG-13	Real Steel	
11:00 p.m.	PG-13	Pirates of the Caribbean 4	<input checked="" type="checkbox"/> DOLBY.3D

### WEDNESDAY - COSTA MAYA

11:30 a.m.	G	Cars 2	<input checked="" type="checkbox"/> DOLBY.3D
4:30 p.m.	PG-13	War Horse	
7:30 p.m.	PG-13	War Horse	
10:30 p.m.	PG-13	John Carter	<input checked="" type="checkbox"/> DOLBY.3D

### THURSDAY - DAY AT SEA

8:30 a.m.	G	Toy Story 3	<input checked="" type="checkbox"/> DOLBY.3D
1:00 p.m.	PG-13	John Carter	<input checked="" type="checkbox"/> DOLBY.3D
3:45 p.m.	PG	Disney nature: African Cats	
5:45 p.m.	PG	Tangled	<input checked="" type="checkbox"/> DOLBY.3D
8:15 p.m.	PG	Tangled	<input checked="" type="checkbox"/> DOLBY.3D
10:30 p.m.	PG	The Muppets	

### FRIDAY - DISNEY'S CASTAWAY CAY

2:30 p.m.	PG	The Muppets	
5:15 p.m.	PG-13	John Carter	<input checked="" type="checkbox"/> DOLBY.3D
8:00 p.m.	PG-13	John Carter	<input checked="" type="checkbox"/> DOLBY.3D
10:45 p.m.	PG-13	John Carter	<input checked="" type="checkbox"/> DOLBY.3D

Movie Schedule subject to change

# MORE TO ENJOY WHILE ONBOARD



## DISNEY VACATION CLUB®

Want to learn more about taking magical vacations year after year? Please see a Disney Vacation Club representative on Deck 4, Midship, or call 7-2805 from your stateroom phone for more information about our group presentations.



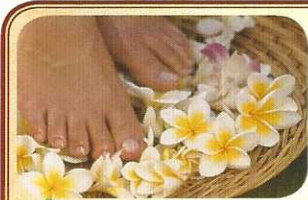
## ANOTHER CRUISE IS IN YOUR FUTURE

Book a future cruise today and you'll save 10%, receive up to a \$200 onboard credit, and pay a reduced deposit! Tune to channel 8 on your stateroom TV for details, visit the Future Cruise Sales Desk, Deck 4, Midship, or call 7-2848.



## PORT & SHOPPING INFORMATION

Meet your Port & Shopping Guides, Johan & Marissa at the Port & Shopping Desk, Deck 4, Midship 7:30 p.m. -8:30 p.m. Don't miss tomorrow's Port & Shopping Show in the Buena Vista Theatre at 11:30 a.m. Stop by to pick up extra raffle tickets to win a Diamond Pendant at the Shopping Show.



## FIRE & ICE MANICURE

Fire & Ice manicure/pedicure is a combination of hot stone massage with cooling potions, combined with skin smoothing exfoliation. Your hands and feet will feel like luxury! 50 minute manicure \$50 and 60 minute pedicure \$70

Call Senses Spa & Salon, 7-1465



## BIBBIDI BOBBIDI BOUTIQUE

Your princess smile lasts a lifetime. The Bibbidi Bobbidi Boutique gives your princess Pixie Dust and Courage. Fairy Godmother has selected her best trainees to make fairy tale wishes a reality. Visit the Boutique on Deck 5, Midship, or call ext. 9438 to make a reservation.



## GET THE PICTURE!

Amazing offer! Order all your stateroom photos on a CD for only \$349.95 and for \$50 more you can take home the printed copy as well! All your stateroom photos in digital as well as printed format for only \$399.95!

Your photos will be ready for viewing in Shutters Digital, Deck 4, Midship this evening. Visit Shutters, Deck 4, Midship, to learn more. Conditions apply.

*\*Please note that photos are available for viewing on our interactive photo kiosks approximately three hours after being taken and are only available for purchase during this cruise.*

## ONBOARD AIRLINE CHECK IN

If you would like to have your boarding passes printed for you onboard and have your luggage taken to the airport for you, register before 8:00 p.m. on Wednesday April 4th. If you have Disney Cruise Line airport transfer to Orlando International Airport and fly with one of the participating airlines Please stop at Guest Services, Deck 3, Midship.

## SURF @ SEA

\$0.75 per minute, or save money by buying blocks of time. \$55.00 for 100 minutes, \$100.00 for 250 minutes and \$150.00 for 500 minutes. Wireless information sheets are available at Guest Services, Deck 3, Midship. *Please note: Due to satellite connectivity, onboard internet service will be noticeably slower than you may be accustomed to and may at times be interrupted or unavailable.*

## ON DEMAND TV

Watch Disney movies, Hollywood features, ABC Shows, and even captioned content, plus much more "On Demand" for FREE in the comfort of your stateroom! Bookmark your movie and come back to watch it later. Press MENU on your stateroom television remote control, and follow the prompts.



The best way to explore our ports of call is through the eyes of a Port Adventure. Our tours are designed to ensure that you see the best that our ports have to offer. Explore the crystal clear waters or swim with the rays at Stingray City in Grand Cayman. Be amazed at incredible Mayan ruins or swim with dolphins in Cozumel. Stop by the Port Adventures Desk, Deck 5, Midship.

## SHOPPING

### DISNEY FANTASY MERCHANDISE

Maiden Voyage, Inaugural and Disney Fantasy Merchandise. All available in Sea Treasures, Mickey's Mainsail and Whitecaps, Deck 3, Forward.

### MERCHANDISE PRODUCT LIMIT

All Maiden Voyage, Inaugural and Disney Fantasy Merchandise will have a limit of two per person, per style, per size (where applicable).

### LIMITED EDITION MERCHANDISE

There will be a random Selection Process. Have you completed your request for Limited Edition Merchandise? Please visit Whitecaps to view our selection and complete the form, starting today 12:00 p.m. Registration closes tomorrow at 4:00 p.m.

### BIBBIDI BOBBIDI BOUTIQUE

Make your reservations for Princess Makeovers and the Pirate League today. Limited space available.

### VISTA GALLERY

Check out our amazing Collection of Original Art exclusively created for the Disney Fantasy. This is your chance to own a piece of Disney Cruise Line History.

Due to port regulations, when the ship is docked, the stores will remain closed.

DF 001 3-31-2012 ©DISNEY

## IMPORTANT INFORMATION

### Security Notice

All Guests (including children) who wish to disembark the ship are required to present their Key to the World card at the gangway. A photo ID is also required for those Guests who are 18 years of age or older. Guests under the age of 18 are required to have a Parent, Guardian or other responsible adult sign an authorization form at the time it is given out if they wish to go ashore unaccompanied. Authorization forms are available at the gangways and Guest Services.

### Cold and Flu Reminder

Please wash hands frequently and thoroughly, particularly before meals. Contact the Health Center by dialing 7-1923, should anyone in your party become ill.

### Corridor Quiet Hours

As a courtesy to all our Guests, please recognize quiet hallway hours from 10:00 p.m. til 8:00 a.m.

### Inclement Weather

For the safety of all Guests, outdoor events may be changed due to unforeseen weather conditions.

### Environmental Message

With Disney's commitment to the Environment, please refrain from throwing anything over the Ship's side. Thank you!

### No Reserved Seats Policy

As a courtesy to all our Guests, we kindly advise that the saving of seats is not permitted in the Walt Disney Theatre, and the saving of the sun loungers is not permitted on Deck 11, 12, and 13. Items left unattended will be returned to lost and found at Guest Services, Deck 3 Midship.

### Smoking

For the comfort of our guests the following areas are designated as Smoking areas: - Promenade Deck (Deck 4), smoking is permitted Port Side, Aft only from 6:00 p.m. to 6:00 a.m.  
- Currents - Deck 13, Forward, Port Side.  
- Meridian Bar - Deck 12, Aft, Port Side, outside.  
- Smoking is permitted on stateroom verandahs. Smoking is prohibited inside all guest staterooms. Guests found smoking in their staterooms will be charged a \$250 stateroom recovery fee.

### Walt Disney Theatre

Theatrical performances may use artificial fog, strobe lights, pyrotechnics and other special effects. For the safety of our performers and the comfort of those around you, the use of any photography, video recording device or any electronic equipment is prohibited.

### Verandah Safety

Please do not leave any combustible materials on your balcony when not present in your stateroom for safety reasons.

DF/BD/W/001/3.31.12/RD/©DISNEY