

# PERSONAL NAVIGATOR



MONDAY, APRIL 2, 2012

Sunrise: 6:18 a.m. Sunset: 6:39 p.m.  
 Evening Attire: Cruise Casual  
 First Tender: Approx. 10:30 a.m.  
 Please refer to your Tendering Letter.  
 Last Tender: 4:00 p.m.  
 Monday: Sunny High: 75°F/24°C  
 Tuesday: Sunny High: 80°F/27°C

GRAND CAYMAN

## WALT DISNEY THEATRE

### LARRY THE CABLE GUY



DECKS 3 & 4, FORWARD  
 6:15 P.M. & 8:30 P.M.

SHOW RECOMMENDED FOR GUESTS 13 YEARS OF AGE & ABOVE  
 NO VIDEO OR PHOTOGRAPHY DURING THE PERFORMANCE

## LAUGHTER ROCKS THE SHIP!

### Grand Cayman Port Information

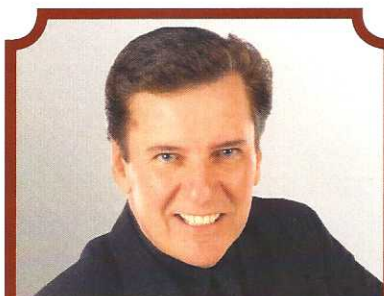
The Cayman Islands were first sighted by European explorers in 1503, in a wayward voyage headed by Christopher Columbus. Though the 2 smaller islands were discovered on this fateful trip, the largest of them, Grand Cayman, would escape attention by sailors until 1655, when the area was claimed by the British. For centuries from the time of their discovery, the Cayman islands would provide a place for ships to come ashore and rest on their journeys into the Caribbean. Crewman on these ships would routinely replenish themselves on the meat provided by the native population of turtles.

By the 19th century, Grand Cayman was overtaken by pirates. It would take political upheaval and the establishment of a local government under British rule to transform the island into what it is today.

Discover a place that—once a welcome refuge for buccaneers—is today a treasured tourist hotspot. From sparkling surf to the bounty of local shops, whatever your pleasure, you'll find it here.

#### DOCKING - Please refer to Tender Letter

The ship anchors outside of the port and Guests take a tender to the dock. Tenders are small boats that provide transportation between the ship and the shore. Guests with special needs/disabilities wishing to leave the ship should check with Guest Services for accessible gangways.



### FAMILY CABARET

Featuring the  
 Comedy and Music of  
 Paul Boland  
 as he entertains the entire  
 family in this cabaret style  
 show.

7:30 pm  
 The Tube, Deck 4, Aft

### Don't Miss:

**Disney Animation - Illusion of Life: Cartoon Physics**  
 3:00 p.m., D Lounge, Deck 4, Midship  
 Go behind the scenes at Walt Disney Animation Studios and see how flat drawings and pencil lines can come to life through basic techniques such as Stretch and Squash, and create your own "bouncing ball" animation exercise in this entertaining and fun enrichment program.

**Disney Channel On Deck**  
 4:00 p.m., Deck Stage, Deck 11, Midship  
 Don't change that channel! It's time for the Disney Channel Afternoon Pool Party! Your Cruise Staff will host an exciting deck party full of games, and contests, all in between your favorite Disney Channel shows! So sit back, relax and enjoy the sun!

**Mega Raffle Jackpot Bingo**  
 7:15 p.m., D Lounge, Deck 4, Midship  
 Card Pre Sales start at 7:15 p.m. First game starts at 7:30 p.m. Join your Cruise Staff for family Bingo fun! Four cash prize games. Plus, great raffle prize packs to be won.

**Partner Playoff**  
 7:30 p.m., O'Gills Pub (18+), Deck 4, Aft  
 Start out by competing against your partner and then finish by teaming up with them to beat those other guys!



### IMPORTANT INFORMATION

Please check your tour tickets for meeting times and locations.  
 Visit the Port Adventures Desk, Deck 5, Midship for any questions.

### DINNER MENU

Animator's Palate: Pacific Rim Cuisine  
 Enchanted Garden: Continental Market  
 Royal Court: French Dinner

### DRINK OF THE DAY

Yellow Bird (Alcoholic)  
 Lava Smoothie (Non Alcoholic)

### IMPORTANT NUMBERS

Fire/Security: 7-3001  
 Medical Emergency: 7-3000  
 Health Center: 7-1923

# FAMILY ACTIVITY HIGHLIGHTS

## PORT AND SHOPPING HIGHLIGHTS SHOW - GRAND CAYMAN

*D Lounge, Deck 4, Midship - 9:30 a.m.*

Join Johan and Marissa, your Port and Shopping guides for last minute shopping tips on Grand Cayman.



### CHIP IT GOLF

*Lobby Atrium (12+), Deck 3, Midship - 2:00 p.m.*

It's par for the course for our Guests 12 and older to compete on our special "greens" in this fun tournament.

## DISNEY ANIMATION - ILLUSION OF LIFE: CARTOON PHYSICS

*D Lounge, Deck 4, Midship - 3:00 p.m.*

Go behind the scenes at Walt Disney Animation Studios and see how flat drawings and pencil lines can come to life through basic techniques such as Stretch and Squash, and create your own "bouncing ball" animation exercise in this entertaining and fun enrichment program.



### DISNEY CHANNEL ON DECK

*Deck Stage, Deck 11, Midship - 4:00 p.m.*

Don't change that channel! It's time for the Disney Channel Afternoon Pool Party! Your Cruise Staff will host an exciting deck party full of games, and contests, all in between your favorite Disney Channel shows! So sit back, relax and enjoy the sun!

## LIVE MUSIC WITH ROB THOMPSON

*Deck 12, Forward - 4:00 p.m.*

Join Rob Thompson as he plays the Guitar live for your listening pleasure.

## NCAA FINALS - KENTUCKY VS. KANSAS

*FunnelVision, Deck 11, Midship - 8:15 p.m.*

Watch the game on the BIG screen as the NCAA Finals are broadcast live on FunnelVision.

## DISNEY KARAOKE

*D Lounge, Deck 4, Midship - 6:30, 8:45 & 10:30 p.m.*

Join your Cruise Staff in D Lounge tonight and sing along to your favorite Disney song - fun for everyone.



### FAMILY FUSION

*D Lounge, Deck 4, Midship - 10:00 p.m.*

Bring the entire family and test your Disney knowledge in this interactive, family game show.

# ADULT ACTIVITY HIGHLIGHTS



## SENSES SPA FITNESS CLASSES AND SEMINARS

*Sunrise Stretch - Senses Spa Fitness Center, 7:00 a.m.*

*Fab Abs - Senses Spa Fitness Center 7:30 a.m.*

*Body Sculpt Boot Camp (Fee Applies) - Senses Spa Fitness Center 8:00 a.m.*

*Group Cycling - Senses Spa Fitness Center, 9:15 a.m.*

## PUB QUIZ

*O'Gills Pub, Deck 4, Aft - 4:00 p.m.*

Join your Club Host, Max, and challenge your fellow cruisers in this fun Pub Quiz!



## CLUB 18\*21 DIVE INTO DJ'ING

*The Tube, Deck 4, Aft, 4:30 p.m.*

Join your fellow cruisers aged 18 to 21 as DJ Z teaches you how to spin the decks!

## PARTNER PLAYOFF

*O'Gills Pub, Deck 4, Aft - 7:30 p.m.*

Start out by competing against your partner and then finish by teaming up with them to beat those other guys!



## VIVA EUROPA

*Europa, Deck 4, Aft, 10:00 p.m.*

Join us as we give you an entertaining taste of Europe. From Italy, France, to Ireland and London and best of all you won't even have to leave the ship!

## ADULT CABARET: BUCKETS N BOARDS

*The Tube, Deck 4, Aft - 10:15 p.m.*

Featuring the Comedy and Rhythm of Buckets N Boards in this adult exclusive Cabaret style show.



# MEGA RAFFLE JACKPOT BINGO

**D Lounge,  
Deck 4, Midship**

**Card Sales - 7:15 p.m.**

**Game Starts - 7:30 p.m.**

Join your Cruise Staff for family Bingo fun! Four cash prize games. Plus, great raffle prize packs to be won. Don't miss out on the fun!



# YOUTH ACTIVITIES HIGHLIGHTS

## DINE & PLAY

A convenience for families dining at 8:15 p.m., our Youth Activities Counselors will be available at 9:15 p.m. at the entrance of Royal Court, Enchanted Garden and Animator's Palate dining rooms to bring registered children to join the fun in the Youth Activity areas.



Deck 5 Midship (7-1440) 9:00 a.m. - 12:00 Mid.

### ONCE UPON A TIME

3:30 p.m.

Join Beverly the Bookmaker for a magical, musical story time featuring a Disney Princess!

### BIG TOP FUN FEST

7:15 p.m.

It's the greatest show on Earth. Come re-discover the circus Disney style with clowns, jugglers and classic Disney cartoons.



Deck 5 Midship (7-1445) 9:00 a.m. - 1:00 a.m.

### DETECTIVE SCHOOL

9:30 a.m. & 6:30 p.m.

It's a crime how much fun you'll have as you go CSI Goofy Style.

### SUPER SLOPPY SCIENCE - FLUBBER

8:30 p.m.

Join Professor Make-O-Mess in some of the most extreme experiments you will ever see in the world of Super Sloppy Science!



Deck 13 Midship (41-14426) 10:00 a.m. - 1:00 a.m.

### ESPN DREAM TEAM DRAFT DAY

1:45 p.m.

Play ball! Join the "Commissioner" and engage in this interactive fantasy baseball draft unlike anything you've ever seen! Can YOU draft the greatest baseball team of All-Time?

### ANYONE CAN COOK - CUPCAKES

7:00 p.m.

Anyone can cook as we work together to create some of our favorite treats.



Entrance on Deck 4 Forward (7-9418)  
12:00 p.m. - 2:00 a.m.

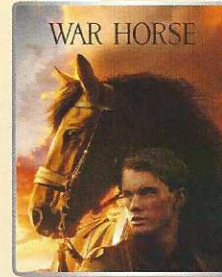
### ESPN MONDAY NIGHT FOOTBALL CALL IT!

10:00 p.m.

Test your Monday Night Football knowledge as you watch some of the greatest highlights of football history and then "make the call" as to what happens next!

# BUENA VISTA THEATRE

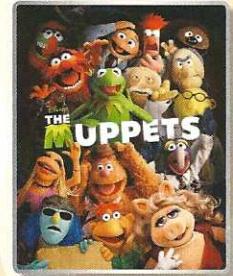
## Today's Movies



WAR HORSE

2:30 p.m.

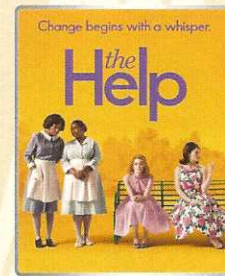
Run Time: 2 hrs 26 mins  
Rating: PG-13



THE MUPPETS

5:45 & 8:15 p.m.

Run Time: 1 hr 43 mins  
Rating: PG



Change begins with a whisper.

the Help

10:30 p.m.  
Run Time: 2 hrs 26 mins  
Rating: PG-13



Bring the entire family and test your Disney knowledge in this interactive, family game show.

10:00 p.m.,  
D Lounge,  
Deck 4, Midship



EUROPA

Join us as we give you an entertaining taste of Europe. From Italy, France, to Ireland and London and best of all you won't even have to leave the ship!

Europa (18+),  
Deck 4, Aft  
10:00 p.m.

## YOUTH ACTIVITIES OPEN HOUSE

Open House is an opportunity for all to come and participate in a variety of exciting activities and free time in the Oceaneer Club, Lab, Edge and Vibe throughout the cruise. During these times secured programming will be offered in the other venue for those looking to check their children into care.

# MORE TO ENJOY WHILE ONBOARD

## ONBOARD AIRLINE CHECK IN

If you would like to have your boarding passes printed for you onboard and have your luggage taken to the airport for you, register by 8:00 p.m. on Wednesday April 4th. If you have Disney Cruise Line airport transfer to Orlando International Airport and fly with one of the participating airlines. Please stop at Guest Services Desk, Deck 3, Midship.



## DISNEY VACATION CLUB®

Want to learn more about taking magical vacations year after year? Please see a Disney Vacation Club representative on Deck 4, Mid-Ship, or call 7-2805 from your stateroom phone for more information about our interactive group presentation.



## GRAND CAYMAN PORT & SHOPPING HIGHLIGHTS

Join Johan and Marissa for last minute shopping tips before heading into Grand Cayman the largest shopping port this cruise! D Lounge, Deck 4, Midship at 9:30 a.m.



## SENSES SPA & SALON PROCOLLAGEN SHAVE

Procollagen Grooming Treatment with a Shave is the shave of all shaves, nourishing and nurturing men's skin, ingrown hairs and shaving induced skin irritations.

55 minutes \$95

Call Senses Spa & Salon, 7-1465

## TODAY'S SHOPPING SPECIAL

### Chopard

Swiss luxury watches and jewelry, designed from artisans showcasing unparalleled glamour and craftsmanship. Available in Whitecaps, Deck 3, Forward.



## Shutters

## SEE YOUR PHOTOS!

All your formal portraits taken last night are ready for purchase. Avoid the rush on the last night of the cruise and order your stateroom photos for one low price on a CD for only \$349.95 CD includes the artwork and for \$50 more you can buy the printed copy as well! Terms and conditions apply.

*\*Please note that photos are available for viewing on our interactive photo kiosks approximately five hours after being taken and are only available for purchase during this cruise.*

## SURF @ SEA

\$0.75 per minute, or save money by buying blocks of time. \$55.00 for 100 minutes, \$100.00 for 250 minutes and \$150.00 for 500 minutes. Wireless information sheets are available at Guest Services, Deck 3, Midship. *Please note: Due to satellite connectivity, onboard internet service will be noticeably slower than you may be accustomed to and may at times be interrupted or unavailable.*

## ON DEMAND TV

Watch Disney movies, Hollywood features, ABC Shows, and even captioned content, plus much more "On Demand" for FREE in the comfort of your stateroom! Bookmark your movie and come back to watch it later. Press MENU on your stateroom television remote control, and follow the prompts.



## BOOK YOUR NEXT CRUISE TODAY AND SAVE

Don't waste time, book your next cruise today. You'll save 10%, receive up to a \$200 onboard credit, and pay a reduced deposit! Tune to Channel 8 on your stateroom TV, visit the Future Cruise Sales Desk, Deck 4 Midship, or call 7-2848.

## Disney CRUISE LINE PORT ADVENTURES

Welcome to the beautiful island paradise of Grand Cayman. Today is the perfect day to get out and explore this stunning island. Take this opportunity to discover Grand Cayman's world renowned snorkeling. Dive down deep and explore the ocean floor on the Atlantis submarine or just sit back, relax and enjoy the sights and sounds of this island on the Grand Cayman Island tour. Visit our friendly Port Adventures team located Deck 5, Midship, and let us answer all your questions about Grand Cayman.

## SHOPPING

### MERCHANDISE PRODUCT LIMIT

All Maiden Voyage, Inaugural and Fantasy Merchandise will have a limit of two per person, per style, per size (where applicable).

### LIMITED EDITION MERCHANDISE

### RANDOM SELECTION PROCESS

Please check your allotted time for you to collect your merchandise outside Sea Treasures, Deck 3, Forward.

### A PIRATES LIFE FOR ME!

The Pirates League - don't forget to book your pirate makeovers for all of the family for tomorrow's pirate night. Bibbidi Boddidi Boutique, Deck 5, Midship.

### DISNEY FANTASY INAUGURAL MERCHANDISE

Stop by Sea Treasures and check out our amazing Disney Fantasy Inaugural range. We have something for everyone from tees, sweatshirts, mugs and more!

### SOPHIA FIORI DIAMOND TRUNK SHOW UNVEILING OF WHITE DIAMONDS

Looking for something to celebrate a special occasion, or just to treat a loved one? Want to be unique and individual? Hollywood's favorite jewelry designer & diamond industry expert, Bernard Bachoura, is personally unveiling his white diamond collection, designed by himself. Stop by Whitecaps to try on the world's most memorably white diamond pieces and commemorate your cruise. Ask the hosts about 50% savings off US Retail. Whitecaps, Deck 3, Forward at 7:30 p.m.

Due to port regulations, when the ship is docked, the stores will remain closed.

## IMPORTANT INFORMATION

### Security Notice

All Guests (including children) who wish to disembark the ship are required to present their Key to the World card at the gangway. A photo ID is also required for those Guests who are 18 years of age or older. Guests under the age of 18 are required to have a Parent, Guardian or other responsible adult sign an authorization form at the time it is given out if they wish to go ashore unaccompanied. Authorization forms are available at the gangways and Guest Services.

### Cold and Flu Reminder

Please wash hands frequently and thoroughly, particularly before meals. Contact the Health Center by dialing 7-1923, should anyone in your party become ill.

### Corridor Quiet Hours

As a courtesy to all our Guests, please recognize quiet hallway hours from 10:00 p.m. til 8:00 a.m.

### Inclement Weather

For the safety of all Guests, outdoor events may be changed due to unforeseen weather conditions.

### Environmental Message

With Disney's commitment to the Environment, please refrain from throwing anything over the Ship's side. Thank you!

### No Reserved Seats Policy

As a courtesy to all our Guests, we kindly advise that the saving of seats is not permitted in the Walt Disney Theatre, and the saving of the sun loungers is not permitted on Deck 11, 12, and 13. Items left unattended will be returned to lost and found at Guest Services, Deck 3 Midship.

### Smoking

For the comfort of our guests the following areas are designated as Smoking areas: - Promenade Deck (Deck 4), smoking is permitted Port Side, Aft only from 6:00 p.m. to 6:00 a.m.  
- Currents - Deck 13, Forward, Port Side.  
- Meridian Bar - Deck 12, Aft, Port Side, outside.  
- Smoking is permitted on stateroom verandahs. Smoking is prohibited inside all guest staterooms. Guests found smoking in their staterooms will be charged a \$250 stateroom recovery fee.

### Walt Disney Theatre

Theatrical performances may use artificial fog, strobe lights, pyrotechnics and other special effects. For the safety of our performers and the comfort of those around you, the use of any photography, video recording device or any electronic equipment is prohibited.

### Verandah Safety

Please do not leave any combustible materials on your balcony when not present in your stateroom for safety reasons.