

PERSONAL NAVIGATOR

THURSDAY, APRIL 26, 2012

Sunrise: 6:13 a.m. Sunset: 7:16 p.m.

Evening Attire: Semi-Formal

Thursday: Sunny High: 79°F/26°C

Friday: Partly Sunny High: 77°F/25°C

DAY AT SEA

Disney's Believe

Genie from Aladdin and many of Disney's most beloved magic makers take a father on a magical journey to show him that anything is possible if you just believe.

WALT DISNEY THEATRE
DECKS 3 & 4, FORWARD
6:15 P.M. & 8:30 P.M.

Assistance available at the entrance to the Walt Disney Theatre 30 minutes prior to show time.

Disney Fantasy Fun Facts

The Disney Fantasy's horn, a prominent element of the "Sailing Away" deck party at the start of the cruise, is quite the musical talent. It's able to perform not just the first musical line of "When You Wish Upon a Star" but also the second line of the song ("makes no difference who you are") plus several measures of "Yo Ho (A Pirate's Life for Me)," "It's a Small World," "Be Our Guest," "Hi Diddle Dee Dee (An Actor's Life for Me)" and – most appropriately – "A Dream is a Wish."

A "light point" is shipbuilders' lingo for anything that's a light. There are approximately 80,000 light points on the Disney Fantasy – "double the normal number for a ship this size," according to Meyer Werft, the shipyard in Germany where the Disney Fantasy was built. The large number is the result of Disney's flare for theatrical experiences – accomplished primarily with LEDs and other "environmentally friendly" lighting.

Debarb Talk Broadcast

Your Cruise Director, Brent, presents important information including details regarding U.S. Customs and Border Protection procedures. Tune into Channel 5 of your stateroom TV.



FAMILY CABARET

Featuring the Comedy & Magic of David Williamson, as he entertains the entire family in this fun-filled show.

7:30 p.m.
The Tube,
Deck 4, Aft

Don't Miss:

Art of the Theme Show Tour

9:30 a.m. & 2:30 p.m., Meet at Meridian (18+), Deck 12, Aft. Join us on a guided ship tour and discover the key ingredients that make the Disney Fantasy cruise ship one-of-a-kind.

Mickey 200

10:00 a.m., The Tube, Deck 4, Aft - (Limited Availability) Don't eat your vegetables... race them in this wild and wacky charge to the finish line. May the best veggie win!

Disney's Behind the Scenes - Behind the Magic

1:00 p.m., Buena Vista Theatre (18+), Decks 4 & 5, Forward. Join Imagineer Shannon Mashchak as she takes you through the recently-opened Storybook Circus. Hear the original design intent behind the new double-Dumbo, The Barnstormer. Featuring the Great Goofini and the new Fantasyland Train Station. Shannon will also give you a sneak peak at what's to come in the Fantasy Forest area of the expansion.

Talent Show Rehearsals

5:00 p.m., D Lounge, Deck 4, Midship

A rehearsal time for those registered for our show tomorrow. There is still time to sign-up, pop by the Guest Services Desk by 4:00 p.m. today.



Sport's Simulators

Digital sports simulators are available at Goofy's Sports Deck on Deck 13, Aft. This state-of-the-art virtual sports experience includes golf, basketball, baseball, hockey and soccer. Book now at the Port Adventures Desk, Deck 5, Midship.

DINNER MENU

Animator's Palate: Captain's Gala
Enchanted Garden: Captain's Gala
Royal Court: Captain's Gala

DRINK OF THE DAY

High Tide (Alcoholic)
Passion Cream Freeze
(Non Alcoholic)

IMPORTANT NUMBERS

Fire/Security: 7-3001
Medical Emergency: 7-3000
Health Center: 7-1923

FAMILY ACTIVITY HIGHLIGHTS



WAKE UP WITH DISNEY JUNIOR

D Lounge, Deck 4, Midship - 9:30 a.m.

What happens when you experience unlimited fun with your favorite Disney Junior shows? An exciting dance party designed especially for pre-schoolers ages seven and under.



JACK-JACK'S INCREDIBLE DIAPER DASH

Lobby Atrium, Deck 3, Midship - 10:00 a.m.

Calling all baby cruisers! The Disney Fantasy's babies take to the mat to see who's the fastest crawler of the seven seas!

CAPTAIN'S SIGNING

Whitecaps, Deck 3, Forward - 12:00 p.m.

Stop by Whitecaps to meet the Master of the Disney Fantasy, Captain Marco, and have your cruise mementos signed.

DISNEY ANIMATION: ILLUSION OF LIFE - STAGING A SCENE

D Lounge, Deck 4, Midship - 12:15 p.m.

Go behind the scenes at Walt Disney Animation Studios and learn how basic poses, silhouette, and placement (long shot, medium shot, close-up) enhance animation storytelling. Then, participate in a drawing exercise where you make the choices to communicate a story in this fun and fascinating enrichment program.

MAGIC WORKSHOP

D Lounge, Deck 4, Midship - 1:15 p.m.

David Williamson teaches you the basics of magic in the fun family event.

TOWEL FOLDING

The Tube, Deck 4, Aft - 2:00 p.m.

Watch how your stateroom hosts create some of those famous towel creatures.

DISNEY TUNE TRIVIA

La Piazza, Deck 4, Aft - 2:30 p.m.

Join your Cruise Staff and pianist Charlie Reuter, as they put your Disney Tune knowledge to the test.

FAMILY DANCE PARTY WITH "THE DREAMERS"

D Lounge, Deck 4, Midship - 7:30 p.m.

Join "The Dreamers" as they play live in D Lounge for your listening and dancing pleasure. With appearances from some of the world famous Disney Characters.

FAMILY KARAOKE

D Lounge, Deck 4, Midship - 9:30 & 10:45 p.m.

Join your Cruise Staff in D Lounge tonight and sing along to your favorite song - fun for everyone.



ADULT ACTIVITY HIGHLIGHTS

FITNESS CLASSES & SEMINARS

Sunrise Stretch - Senses Fitness Center, 7:00 a.m.

Fab Abs - Senses Fitness Center, 7:30 a.m.

Body Sculpt Boot Camp (Fee Applies) - Senses Fitness Center, 9:00 a.m.

Fitness Frenzy (13-17 yrs) (Fee Applies) - Senses Fitness Center, 10:00 a.m.

Seminar: Back Pain Solutions - Outlook, 10:15 a.m.

Seminar: Detox for Health and Weight Loss - Outlook, 11:00 a.m.

Seminar: Eat More to Weight Less - Outlook, 2:00 p.m.

Group Cycling - Senses Fitness Center, 4:00 p.m.



TASTING SEMINARS

Wine Tasting Around the World (21+) - Ooh La La, 1:00 p.m.

Mixology (21+) - Meridian, 4:00 p.m.

Please make reservations for tastings at Guest Services for a nominal fee.



DIVE INTO DJ'ING

The Tube, Deck 4, Aft, 3:30 p.m.

MIXER EVENT

O'Gills Pub, Deck 4, Aft, 10:00 p.m.



ESPN DREAM TEAM DRAFT DAY - FOOTBALL

O'Gills Pub, Deck 4, Aft - 1:00 p.m.

Join the "Commissioner" and engage in this interactive fantasy Football draft unlike anything you've ever seen! Can YOU draft the greatest team of All-Time?



ANYONE CAN COOK

D Lounge, Deck 4, Midship - 2:30 p.m.

From our galley to yours; join our chefs as they show you how to prepare delicious dishes. Today's menu is Lobster Ravioli.

LIVE MUSIC WITH CHARLIE REUTER

La Piazza, Deck 4, Aft - 7:30, 9:45 & 10:45 p.m.

Charlie Reuter plays a special tribute to the greatest songs of Elton John, Billy Joel & Harry Connick Jr at 10:45 p.m.

CABARET: KEVIN JOHNSON

The Tube, Deck 4, Aft - 10:15 p.m.

Featuring the Comedy & Ventriloquism of Kevin Johnson as he entertains you in this adult Cabaret-Style show.

\$10,000 JACKPOT BINGO

D Lounge, Deck 4, Midship

Card Sales - 10:45 a.m. Game Starts - 11:00 a.m.

It's big, it's massive, it's supersized. It's \$10,000 MEGA jackpot bingo! Take home \$10,000 if you can cover your card in 46 numbers or less. If not, we carry on to play for the biggest cash prize of the session.

FINAL JACKPOT BINGO

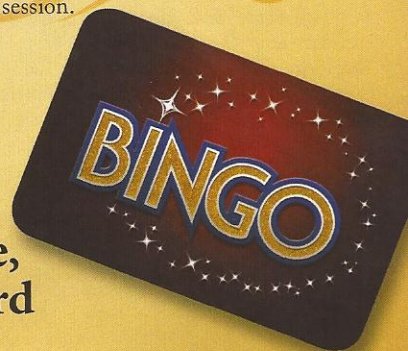
**Buena Vista Theatre,
Decks 4 & 5, Forward**

Card Sales - 3:15 p.m.

Game Starts - 3:45 p.m.

The snowball jackpot **MUST BE WON** at this final session. Who will be the lucky winner? An estimated \$8,000 in prize money to be won.

First game starts at 3:45 p.m.!



YOUTH ACTIVITIES HIGHLIGHTS

DINE & PLAY

A convenience for families dining at 8:15 p.m., our Youth Activities Counselors will be available at 9:15 p.m. at the entrance of Royal Court, Enchanted Garden and Animator's Palate dining rooms to bring registered children to join the fun in the Youth Activity areas.



Deck 5 Midship (7-1440) 9:00 a.m. - 12:00 mid.
(3 - 12 years old)

BIG TOP FUN FEST

3:45 p.m.

It's the greatest show on Earth. Come re-discover the circus Disney style with clowns, jugglers and classic Disney cartoons.

ONCE UPON A TIME

6:30 p.m.

Join Beverly the Bookmaker for a magical, musical story time featuring a Disney Princess!



Deck 5 Midship (7-1445) 9:00 a.m. - 1:00 a.m.
(3 - 12 years old)

GET THE HOOK

3:00 p.m.

A villainous villain has stolen Captain Hook's prized golden hook. Become a member of the Top Detective Agency and help solve the clue's to retrieve Hook's hook.

STITCH'S ADVENTURE SQUAD

7:30 p.m.

Stitch, everyone's favorite alien, is making an appearance to share some of his mischievous games and activities.



Deck 13 Midship (41-14426) 10:00 a.m. - 1:00 a.m.
(11 - 14 years old)

DISNEY ANIMATION: ILLUSION OF LIFE - CARTOON PHYSICS

4:00 p.m.

Go behind the scenes at Walt Disney Animation Studios and see how flat drawings and pencil lines can come to life through basic techniques such as Stretch and Squash, and create your own "bouncing ball" animation exercise in this entertaining and fun enrichment program.

ESPN DREAM TEAM DRAFT DAY - BASKETBALL

9:30 p.m.

Join the "Commissioner" and engage in this interactive fantasy Basketball draft unlike anything you've ever seen! Can YOU draft the greatest team of All-Time?



Entrance on Deck 4 Forward (7-9418)
10:00 a.m. - 2:00 a.m.
(14 - 17 years old)

DIVE INTO DJ'ING

1:30 p.m.

Hop on the turn tables and learn to scratch with Guest DJ Alex Metallic.

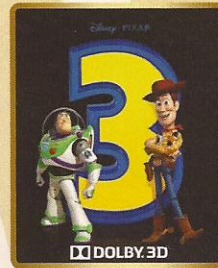
DREAM NOW, SEA HOW!

4:00 p.m.

Imagine a job where your days are spent dreaming up plots, characters, designs or mechanics that only come from one place... In this VIP Experience you will meet one of the creative minds with Disney. They will ignite your imagination and answer your questions.

BUENA VISTA THEATRE

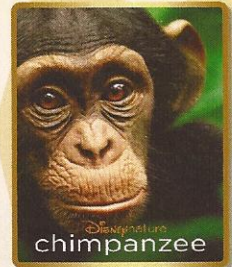
Today's Movies



8:30 a.m.

Run Time: 1 hr 43 mins

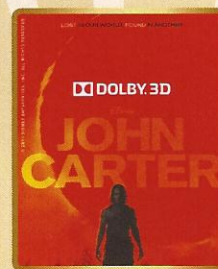
Rating: G



10:45 a.m.

Run Time: 1 hr 18 mins

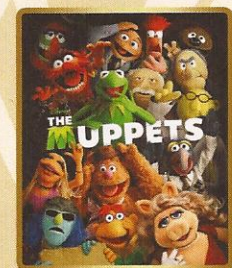
Rating: G



5:15 & 8:00 p.m.

Run Time: 2 hrs 12 mins

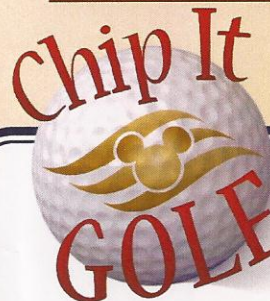
Rating: PG-13



10:45 p.m.

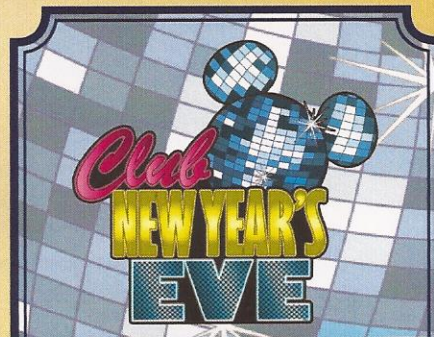
Run Time: 1 hr 43 mins

Rating: PG



It's par for the course for our Guests 12 and older to compete on our special "greens" in this fun tournament.

**Lobby Atrium (12+),
Deck 3, Midship
2:45 p.m.**



Come join us as we count down to a brand new year while taking you on a journey of great musical genre in history!

**10:15 p.m.,
D Lounge,
Deck 4, Midship**

YOUTH ACTIVITIES OPEN HOUSE

Open House is an opportunity for all to come and participate in a variety of exciting activities and free time in the Oceaneer Club, Lab, Edge and Vibe throughout the cruise. During these times secured programming will still be offered in the other venue for those looking to check their children into care.

MORE TO ENJOY WHILE ONBOARD



Someone has stolen paintings on the ship! Use your special detective "badge" to track down the villain and help Mickey get back those paintings!

Decks 2 & 5, Midship
9:00 a.m. - 9:00 p.m.



SAVE TIME TOMORROW, BOOK YOUR NEXT CRUISE TODAY

Avoid the last minute rush. Book your next cruise today for the best availability and pricing. You'll save 10%, receive up to a \$200 onboard credit, and pay a reduced deposit! Tune to Channel 8 for details, visit the Future Cruise Sales Desk, Deck 4 Midship, or call 7-2848.



DISNEY VACATION CLUB® GROUP PRESENTATION

Want to learn more about taking magical vacations year after year? Please see a Disney Vacation Club representative on Deck 4, Midship, or call 7-2805 from your stateroom phone for more information about our interactive group presentation.

SURF @ SEA

\$0.75 per minute, or save money by buying blocks of time. \$55.00 for 100 minutes, \$100.00 for 250 minutes and \$150.00 for 500 minutes. Wireless information sheets are available at Guest Services, Deck 3, Midship.

Please note: Due to satellite connectivity, onboard internet service will be noticeably slower than you may be accustomed to and may at times be interrupted or unavailable.

Disney Cruise Line.



Disney's private island Castaway Cay not only offers a terrific family beach day, but many other excursions and rentals to compliment. Snorkeling, bike and float rentals, parasailing plus much more, means that there is something for everyone at Disney's Castaway Cay.

To make your reservation, visit the Port Adventures Desk, Deck 5, Midship.

SHOPPING

FANTASY INAUGURAL SAILINGS

Bring home a memory of the Fantasy's Inaugural sailings. Limited time only. Choose from tees, hats, sweatshirts, mugs and scrapbooks. Sea Treasures, Deck 3, Forward.

SOPHIA FIORI FREE GIFT

If you haven't seen the million dollar necklace stop by Whitecaps, say the word "ELIZABETH" and receive a free crystal pendant gift. While supplies last. Available in Whitecaps, Deck 3, Forward.

SWAROVSKI

Crystal glass from Austria that exceeds all others in terms of quality and elegance. Boxed jewelry pieces and Disney figurines now available in Whitecaps, Deck 3, Forward.

CHAMPAGNE FOR EVERYONE!

Exclusive Disney Fantasy, Ooh La La and Swarovski champagne available in Whitecaps, Deck 3, Forward.

SKAGEN

Men's and women's mesh, slimline and titanium watch collection from Denmark. Ultra Slimline watches that make the watch part of your body with a touch of elegance. Whitecaps, Deck 3, Forward.

Due to port regulations, when the ship is docked, the stores will remain closed.



SALON TASTER SPECIAL

- Scalp Massage
- European Facial
- Hand Treatment
- Sunglow Makeover
- Conditioning Hair Treatment
- Eye Collagen Treatment

- Foot & Ankle Massage
- Neck & Shoulder Massage

Three for 99.00
Five for 119.00
All Eight for 139.00

BIBBIDI BOBBIDI BOUTIQUE

Becoming the princess of your dreams creates memories for a lifetime. Where Fairy Godmothers in training are ready with Pixie Dust and Magic! Make your reservations for princess makeovers and the Pirate League today. Limited space available. Bibbidi Bobbidi Boutique is located on Deck 5, Midship or call ext. 9438 to make a reservation.



GET THE PICTURE

Amazing offer! Order all your stateroom photos on a CD for only \$349.95 and for \$50 more you can take home the printed copy as well! All your stateroom photos in digital as well as printed format for only \$399.95! Your photos will be ready for viewing in Shutters Digital, Deck 4, Midship, this evening. Visit Shutters, Deck 4, Midship, to learn more. Conditions apply.

**Please note that photos are available for viewing on our interactive photo kiosks approximately five hours after being taken and are only available for purchase during this cruise.*

DE-003 04-21-2012 ©DISNEY

IMPORTANT INFORMATION

Security Notice

All Guests (including children) who wish to disembark the ship are required to present their Key to the World card at the gangway. A photo ID is also required for those Guests who are 18 years of age or older. Guests under the age of 18 are required to have a Parent, Guardian or other responsible adult sign an authorization form at the time it is given out if they wish to go ashore unaccompanied. Authorization forms are available at the gangways and Guest Services.

Please Note:

Please remember to use plenty of sunscreen & mosquito/Insect repellent when venturing ashore.

Cold and Flu Reminder

Please wash hands frequently and thoroughly, particularly before meals. Contact the Health Center by dialing 7-1923, should anyone in your party become ill.

Corridor Quiet Hours

As a courtesy to all our Guests, please recognize quiet hallway hours from 10:00 p.m. til 8:00 a.m.

Inclement Weather

For the safety of all Guests, outdoor events may be changed due to unforeseen weather conditions.

Environmental Message

With Disney's commitment to the Environment, please refrain from throwing anything over the Ship's side. Thank you!

No Reserved Seats Policy

As a courtesy to all our Guests, we kindly advise that the saving of seats is not permitted in the Walt Disney Theatre, and the saving of the sun loungers is not permitted on Deck 11, 12, and 13. Items left unattended will be returned to lost and found at Guest Services, Deck 3 Midship.

Smoking

For the comfort of our guests the following areas are designated as Smoking areas: - Promenade Deck (Deck 4), smoking is permitted Port Side, Aft only from 6:00 p.m. to 6:00 a.m.
- Currents - Deck 13, Forward, Port Side.
- Meridian Bar - Deck 12, Aft, Port Side, outside.
- Smoking is permitted on stateroom verandahs. Smoking is prohibited inside all guest staterooms. Guests found smoking in their staterooms will be charged a \$250 stateroom recovery fee.

Walt Disney Theatre

Theatrical performances may use artificial fog, strobe lights, pyrotechnics and other special effects. For the safety of our performers and the comfort of those around you, the use of any photography, video recording device or any electronic equipment is prohibited.

Verandah Safety

Please do not leave any combustible materials on your balcony when not present in your stateroom for safety reasons.

DF/BD/TE/003/4.21.12/RD/©DISNEY