

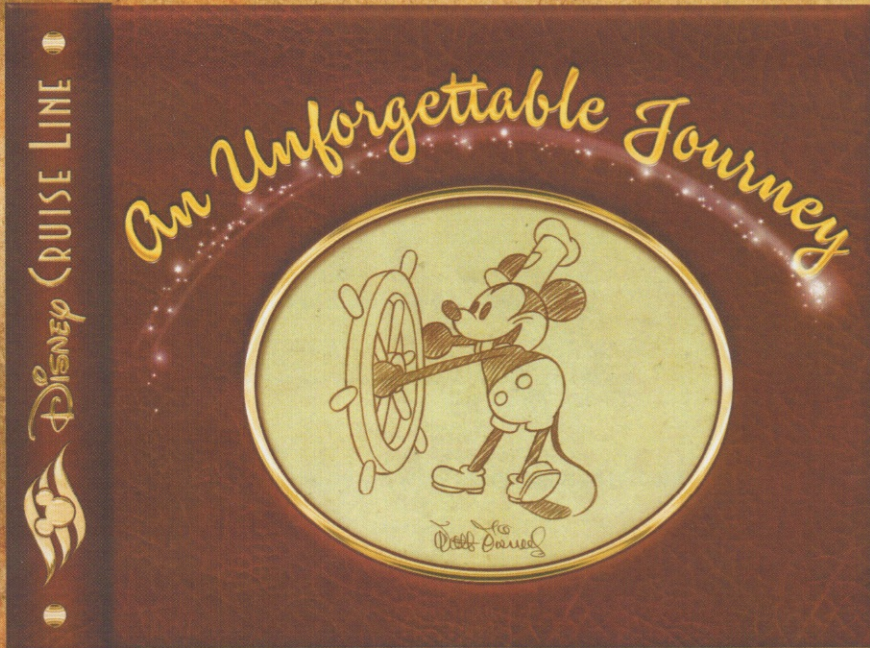
# PERSONAL NAVIGATOR

Sunrise: 6:42 a.m. Sunset: 7:35 p.m.  
 Evening Attire: Cruise Casual  
 All Ashore: 9:30 a.m.  
 All Aboard: 4:30 p.m.

Friday: Partly Sunny High: 79°F/26°C  
 Saturday: Cloudy High: 73°F/23°C

FRIDAY, APRIL 19, 2013

CASTAWAY CAY



Join us tonight as we celebrate our magical voyage, inspired by the words and wisdom of the man himself,

Walt Disney, featuring the Walt Disney Theatre cast, World Famous Disney Characters and the Comedy and Ventriloquism of Taylor Mason.

**WALT DISNEY THEATRE**  
 Deck 3 & 4, Forward  
 6:15 p.m. & 8:30 p.m.



Assistance available at the entrance to the Walt Disney Theatre 30 minutes prior to show time.

## Disney's Castaway Cay

Reserved exclusively for Guests on Disney Cruise Line Bahamian and Caribbean cruise vacations, Castaway Cay is Disney's private port-of-call paradise. On this island, enjoy tropical leisure activities, such as snorkeling, boating, swimming and sunbathing.

### Friendly Reminders

- You will need your Key To The World Card for all transactions on Disney's Castaway Cay except for the Post Office.
- For your convenience, beach towels are available as you leave the ship; please return them at the gangway at the end of your day.
- Serenity Bay is reserved for Guests 18 and older.
- A limited number of all-terrain wheelchairs across from Scuttle's Cove.
- Due to our commitment to the environment, we ask that seashells, coral and other natural treasures be left undisturbed at Disney's Castaway Cay for all to enjoy.

### Debark Talk Broadcast

Your Cruise Director, Brent presents important information including details regarding U.S. Customs and Border Protection procedures. Tune in to Channel 5 of your stateroom TV.

Please place your luggage outside your stateroom between 8:30 - 10:30 p.m.

Thank you in advance for completing your comment card.

# SEA YA' REAL SOON!

Mickey and Minnie, along with the rest of the Walt Disney Characters, invite you to join them in the ship's Atrium. You won't want to miss this very special farewell meet and greet. Bring your cameras! Lobby Atrium, Deck 3, Midship, 4:30 & 10:15 p.m.

## Don't Miss:

### The Disney Fantasy's Whistle

Will be played at 5:00 p.m. today as we set sail from Castaway Cay. The Disney Fantasy's whistle, a prominent element of the "Sailing Away" deck party at the start of the cruise, is quite the musical talent. It's able to perform not just the first musical line of "When You Wish Upon a Star" but also the second line of the song ("makes no difference who you are") plus several measures of "Yo Ho (A Pirate's Life for Me)," "It's a Small World," "Be Our Guest," "Hi Diddle Dee Dee (An Actor's Life for Me)" and "A Dream is a Wish."

### runDisney: Castaway Cay 5K (12+)

Meet in The Tube, Deck 4, Aft - 9:00 a.m. (Departs at 9:30 a.m.) We will depart the ship at 9:30 a.m. and make our way to the Bike Rentals where the run will begin. Runners meet in The Tube, Deck 4, Aft, at 9:00 a.m. (12+)

### Battle of the Sexes (18+)

The Tube, Deck 4, Aft - 10:15 p.m.

Join us and find out who will dominate in this hilarious battle of the sexes.



### Visit The Future Cruise Desk Early Today

Please visit the Future Cruise Desk, Deck 4, Midship, as early as possible today. The last day of the cruise tends to get busy in the evening, and we want to be sure you have the opportunity to save 10% on your next cruise, receive up to a \$200 onboard credit, and pay a reduced deposit! Tune to Channel 8 for details.

## DINNER MENU

Animator's Palate: Sea Ya' Real Soon  
 Enchanted Garden: Sea Ya' Real Soon  
 Royal Court: Sea Ya' Real Soon

## DRINK OF THE DAY

Stingray (Alcoholic)  
 Parrot Song (Non Alcoholic)

### IMPORTANT NUMBERS

Fire/Security: 7-3001  
 Medical Emergency: 7-3000  
 Health Center: 7-1923

# FUN FOR ALL AGES HIGHLIGHTS



## RUNDISNEY: CASTAWAY CAY 5K (12+)

Meet in *The Tube, Deck 4, Aft* - 9:00 a.m. (Departs at 9:30 a.m.)

We will depart the ship at 9:30 a.m. and make our way to the Bike Rentals where the run will begin. Runners meet in *The Tube, Deck 4, Aft*, at 9:00 a.m. (12+)

## ISLAND POWER WALK

Meet on the pier by the showers, - 9:45 a.m.

Join your Cruise Staff for a brisk walk around the island. Meet outside, on the pier by the showers. Meet time is 9:45 a.m. Walk leaves promptly at 10:00 a.m.

## CRAB RACES

*Island Gazebo 1*, - 11:45 a.m.

*Island Gazebo 2*, - 12:45 p.m.

Watch some local sea creatures make a break for the finish line.

## PLAYHOUSE D LOUNGE

*D Lounge, Deck 4, Midship* - 5:00 p.m.

Calling our youngest of cruisers! Here is a special Playtime that is just for you. Come meet new friends and join in on the fun as your Cruise Staff team takes you through interactive activities made just for you!

## JEWISH SABBATH

*Outlook, Deck 14, Midship* - 5:15 p.m.

A quiet space is reserved for those wishing to conduct their own service.



## D TUNES FAM JAM

*D Lounge, Deck 4, Midship* - 9:45 p.m.

Tune in and rock with us at this family dance party! Spread the word, there will be cool music, new dances, contests and a chance to win great prizes.

## FAREWELL KARAOKE

*D Lounge, Deck 4, Midship* - 10:30 p.m.

Bring along the entire family for one more round of karaoke. This is your last opportunity to grab the mic and sing along to your favorite song.

# ADULT ACTIVITY HIGHLIGHTS



## SENSES SPA FITNESS CLASSES & SEMINARS

*Sunrise Stretch* - Donald's Pool - 7:00 a.m.

*Fab Abs* - Donald's Pool - 7:30 a.m.

*Body Sculpt Boot Camp* (Nom. Fee) - Senses Fitness Center - 8:00 a.m.

*Yoga on the Beach* - Serenity Bay - 11:00 a.m.

*Fab Abs* - Senses Fitness Center - 5:00 p.m.

## TASTING CLASSES

*Beer Tasting* (21+) - O'Gills Pub (Nom. Fee, Pre Book) - 4:30 p.m.

Please make reservations for tastings at Guest Services for a nominal fee. Tasting Seminars are only for Guests 21 and Older.

CLUB  
18\*21

## CLUB 18\*21 - BASKETBALL FREE THROW

*In Da Shade Game Pavilion*, - 1:00 p.m.

## CLUB 18\*21 - FAREWELL

*O'Gills Pub, Deck 4, Aft* - 10:00 p.m.

## LIVE PIANO WITH GAYLA SMITH

*La Piazza, Deck 4, Aft* - 7:30 p.m. & 10:00 p.m.

Join Gayla Smith as she plays live piano for your listening pleasure.

## BATTLE OF THE SEXES

*The Tube, Deck 4, Aft* - 10:15 p.m.

Join us and find out who will dominate in this hilarious battle of the sexes.

## LIVE MUSIC WITH THE SWITCH

*La Piazza, Deck 4, Aft* - 10:45 p.m.

Join The Switch as they play live for your listening pleasure.

## GOIN' UNDERGROUND WITH DJ BRANDON

*The Tube, Deck 4, Aft* - 11:15 p.m.

Grab onto the handrails as we take you underground with DJ Brandon.



# YOUTH ACTIVITY HIGHLIGHTS

## DINE & PLAY

A convenience for families dining at 8:15 p.m., our Youth Activities Counselors will be available at 9:15 p.m. at the entrance of Royal Court, Enchanted Garden and Animator's Palate dining rooms to bring registered children to join the fun in the Youth Activity areas.



*Deck 5, Midship (7-1440)*  
(3-12 years old) 4:30 p.m. - 12:00 mid

## TOY STORY BOOT CAMP

7:15 p.m.  
Join Corporal Green in our own version of boot camp as we learn how to have fun - The Toy Story way!

## CRUISIN' WITH CRUSH

8:45 p.m.  
Be sure to check out the Oceaneer Club to see Crush when he stops by!



*Deck 5, Midship (7-1445)*  
(3-12 years old) 4:00 p.m. - 12:00 mid

## STITCH'S ADVENTURE SQUAD

7:30 p.m.  
Stitch, everyone's favorite alien, is making an appearance to share some of his mischievous games and activities.

## SUPER SLOPPY SCIENCE - FLUBBER

8:15 p.m.  
Join Professor Make-O-Mess in some of the most extreme experiments you will ever seen in the world of Super Sloppy Science!



*Deck 13, Midship (7-9743)*  
(11-14 years old) 4:30 p.m. - 12:00 mid

## DISNEY ANIMATION: PERSISTENCE OF VISION

6:00 p.m.  
Go behind the scenes at Walt Disney Animation Studios and learn the principles that make animation work, and try your hand at creating your own easy animation demonstration in this fun and fascinating enrichment program.

## THAT'S HILARIOUS

9:30 p.m.  
Ever wanted to show off your comedy skills? Then be a part of the cast for the crazy improv show "That's Hilarious" and put on a live show for your friends.



*Entrance on Deck 4, Forward (7-9418)*  
(14-17 years old) 4:30 p.m. - 1:00 a.m.

## DREAM NOW! SEA HOW! - ANIMAL, SCIENCE AND ENVIRONMENT

3:30 p.m.  
Ever wonder how man and animal connect and live in harmony? In an interactive session you will dive into their background, education, mentors, and the dream that lead them on their path toward working with animals.

## ZOMBIFIED PREMIERE

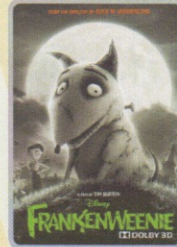
10:15 p.m.  
One time only! Come join us in the Buena Vista Theatre for this exclusive big screen premiere of "Zombified," a film featuring the Teens of Vibe as the cast!

# BUENA VISTA THEATRE

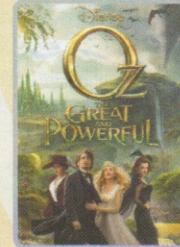
## Today's Movies

**DOLBY 3D**

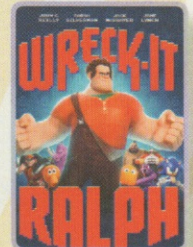
**OC** - Open Captioning



8:00 a.m.  
Duration: 1 hr 24 min  
Rating: PG

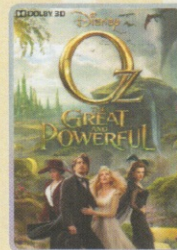


10:00 a.m.  
Duration: 2 hr 07 min  
Rating: PG

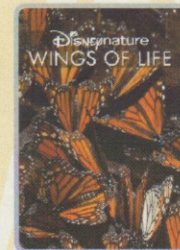


12:30 p.m.  
Duration: 1 hr 53 min  
Rating: PG

**DOLBY 3D**



3:00 p.m.  
Duration: 2 hr 07 min  
Rating: PG



6:00 p.m. & 8:30 p.m.  
Duration: 1 hr 17 min  
Rating: G



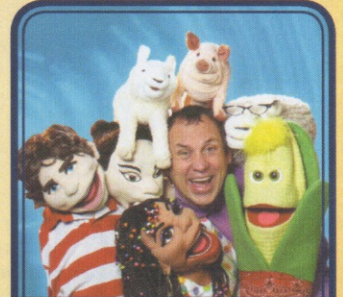
10:45 p.m.  
Duration: 2 hr 07 min  
Rating: PG



Does your family have what it takes to make their performing dreams come true?

Find out at the Disney Fantasy Family Talent Show, dare to show your family's flair!

*D Lounge,  
Deck 4, Midship,  
7:30 p.m.*



## ADULT CABARET

Featuring the Comedy & Ventriloquism of Taylor Mason, as he entertains you in this adult exclusive show.

*The Tube, (18+)  
Deck 4, Aft,  
10:45 p.m.*

## YOUTH ACTIVITIES OPEN HOUSE

Open House is an opportunity for all to come and participate in a variety of exciting activities and free time in the Oceaneer Club, Lab and Edge throughout the cruise. During these times secured programming will still be offered in the other venue for those looking to check their children into care.  
Vibe: 8:00 p.m. - 10:15 p.m. Disney's Oceaneer Club: 9:00 a.m. - 12:00 p.m.  
(Flubber and Smoothie hour are Disney's Oceaneer Lab: 12:00 p.m. - 4:00 pm activities offered during Open House)

# MORE TO ENJOY WHILE ONBOARD

THE MUPPETS

There's a Muppet mystery onboard, and Kermit and Pepe need YOU to solve it! Search the ship for clues and use our special detective "badge" to catch the culprit!



**Decks 2 & 5, Midship,**  
9:00 a.m. - 10:00 p.m.

Disney CRUISE LINE  
**PORT ADVENTURES**

Welcome to Disney's Island Paradise Castaway Cay. Today is the day to relax in an inner tube, snorkel in the Caribbean blue, get up-close and personal to real life stingrays or fly high in the sky on a parasail excursion during a breathtaking aerial adventure. Visit Marge's Barges or one of the rental locations and our friendly team will assist in making any last minute bookings.

**PORT ADVENTURES MEETING TIMES AND LOCATIONS**

As per ticket	Castaway Ray's Stingray Adventure	Stingray Hut
As per ticket	Castaway Cay Bottom Fishing	Marge's Barges
As per ticket	Glass Bottom Boat	Marge's Barges
As per ticket	Nature Walk and Kayaking	As per ticket
As per ticket	Parasailing	Marge's Barges
As per ticket	Seahorse Catamaran Snorkel Adventure	Marge's Barges
9:30 a.m.	Teen Wild Side	Vibe
As per ticket	Watercraft Ski Adventure	Boat Beach

**CASTAWAY CAY ISLAND RENTALS**

Bicycles	9:30 a.m. - 4:00 p.m.	Near Cookies Too / Windsock
Boats	9:30 a.m. - 4:00 p.m.	Boat Beach
Snorkeling Gear	9:30 a.m. - 3:30 p.m.	Gil's Fins and Boats / Flippers and Floats
Float	9:30 a.m. - 3:30 p.m.	Gil's Fins and Boats / Flippers and Floats
Getaway Package	9:30 a.m. - 3:30 p.m.	Gil's Fins and Boats / Flippers and Floats



**SENSES**  
SPA & SALON

**RECOVERY PACKAGE**

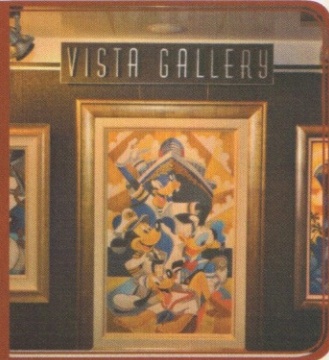
- 20 minute Back, Neck and Shoulder Massage
- 20 minute Scalp Massage
- 20 minute Foot & Ankle Massage

60 minutes total \$99

**VISTA GALLERY**

Your last opportunity to purchase your Disney art. Shipping available. Stop by the Vista Gallery, Deck 4, Midship, to find out more.

6:00 p.m. - 10:00 p.m.



**SHOPPING**

**SHOPPING IN PARADISE**

Disney's Castaway Cay has two shopping locations with Disney's Castaway Cay merchandise. This is your chance to take home a memory of our private island!

**HELPFUL SHOPPING TIP**

While shopping onboard, you may collect your items from all three stores before proceeding to checkout at any register. No need to have to wait in line in each store to pay for your items separately! Whitecaps, Sea Treasures, and Mickey's Mainsail, Deck 3, Forward.

**BLUE GALLERY ART**

Don't forget to stop by the Vista Gallery Deck 4, Midship to check out the Blue Gallery art pieces, and meet our Guest Artist David Schluss.

**FRAGRANCE OF THE DAY**

Stop by Whitecaps to test our selected fragrance today! Deck 3, Forward.

**FANTASY LOGO**

Bring home a memory of your first sailing on the Disney Fantasy. Choose from T-shirts, hats, sweatshirts, mugs, and scrapbooks. Deck 3, Forward.

**GREAT OFFERS ONBOARD**

Get a Disney Cruise Line duffel for \$17.95 when you spend \$30 or more and a Disney Cruise Line towel for \$14.95 when you spend \$25 or more. Promotion available in Mickey's Mainsail, Sea Treasures, and Whitecaps. Shops are located Deck 3, Forward.

**BUY ONE, GET ONE 40% OFF**

all things fashionistas! For those of you who like a little flair in your casual wear, check out the new Disney Cruise Line® Bling Tees available at Sea Treasures for \$25 each, or 2 for \$40. Deck 3, Forward.

**VISTA GALLERY**

Toy Story, Monster's Inc., Finding Nemo, Up - what's your favorite Disney-Pixar film? You have a chance to purchase a piece of Disney-Pixar artwork to take home with you today! Just stop by the Vista Art Gallery to see the Disney-Pixar Collection. Vista Art Gallery, Deck 4, Midship.

Due to port regulations, when the ship is docked, the stores will remain closed.

**Shutters**

**GET THE PICTURE**

This is your last chance to purchase your photo CD and prints. Order all your stateroom photos on a CD for \$349.95 and we will include all the prints for ONLY \$50 extra!

All your photos will be available in your stateroom folder and you can view it on our interactive photo kiosks in Shutters Digital on Deck, 4, Midship. Visit Shutters to learn more. Conditions apply

*\*Please note that photos are available for viewing on our interactive photo kiosks approximately five hours after being taken and are only available for purchase during this cruise.*

**IMPORTANT INFORMATION**

**Security Notice**

All Guests (including children) who wish to disembark the ship are required to present their Key to the World card at the gangway. A photo ID is also required for those Guests who are 18 years of age or older. Guests under the age of 18 are required to have a Parent, Guardian or other responsible adult sign an authorization form at the time it is given out if they wish to go ashore unaccompanied. Authorization forms are available at the gangways and Guest Services.

**Please Note:**

Please remember to use plenty of sunscreen and mosquito repellent when venturing ashore.

**Cold and Flu Reminder**

Please wash hands frequently and thoroughly, particularly before meals. Contact the Health Center by dialing 7-1923, should anyone in your party become ill.

**Corridor Quiet Hours**

As a courtesy to all our Guests, please recognize quiet hallway hours from 10:00 p.m. til 8:00 a.m.

**Inclement Weather**

For the safety of all Guests, outdoor events may be changed due to unforeseen weather conditions.

**Environmental Message**

With Disney's commitment to the Environment, please refrain from throwing anything over the Ship's side. Thank you!

**No Reserved Seats Policy**

As a courtesy to all our Guests, we kindly advise that the saving of seats is not permitted in the Walt Disney Theatre, and the saving of the sun loungers is not permitted on Deck 11, 12, and 13. Items left unattended will be returned to lost and found at Guest Services, Deck 3 Midship.

**Smoking**

For the comfort of our guests the following areas are designated as Smoking areas: - Promenade Deck (Deck 4), smoking is permitted Port Side, Aft only from 6:00 p.m. to 6:00 a.m.  
- Currents - Deck 13, Forward, Port Side.  
- Meridian Bar - Deck 12, Aft, Port Side, outside.  
- Smoking is permitted on stateroom verandahs. Smoking is prohibited inside all guest staterooms. Guests found smoking in their staterooms will be charged a \$250 stateroom recovery fee.

**Walt Disney Theatre**

Theatrical performances may use artificial fog, strobe lights, pyrotechnics and other special effects. For the safety of our performers and the comfort of those around you, the use of any photography, video recording device or any electronic equipment is prohibited.

**Verandah Safety**

Please do not leave any combustible materials on your balcony when not present in your stateroom for safety reasons.

# Disney's Castaway CAY

Disney CRUISE LINE



## ATTRACTIONS

- A** Arrival Plaza
- B** Post Office  
Castaway Cay Postmark
- C** Marge's Barges & Sea Charters Dock  
Parasailing, Fishing Charters & More
- D** Boating Harbor
- E** Scuttle's Cove  
Children's Program Areas
- F** Boat Beach  
Watercraft Rental
- G** Monstro Point  
Whale Dig Site
- H** Castaway Ray's Stingray Adventure
- I** Gil's Fins and Boats  
Snorkel, Tube & Float Rentals
- J** Gazebos (2)
- K** Castaway Family Beaches (2)
- L** Snorkeling Lagoon
- M** Swimming Lagoon
- N** In-Da-Shade Games  
Basketball, Billiards, Ping-Pong & More
- O** Flippers and Floats  
Snorkel, Tube & Float Rentals
- P** Pelican Plunge  
Water Slide
- Q** Hideout  
Teens Only
- R** Bike Rentals
- S** Beach Sports  
Tetherball, Volleyball, Soccer
- T** Spring-A-Leak  
Wet Play Area
- U** Beach Cabanas 1-17
- V** The Windsock Hut  
Float Rentals for Adult Beach

- W** Massage Cabanas
- X** Serenity Bay  
Exclusive Beach Area for Adults  
18 Years & Older
- Y** Beach Cabanas 18-21
- Z** Observation Tower

## FOOD AND BEVERAGE

- 1** Pop's Props and Boat Repair  
Covered Seating
- 2** Dig In  
Covered Seating
- 3** Cookie's BBQ
- 4** Conched Out Bar  
Frozen Specialty Drinks,  
Cocktails & Beer
- 5** Outdoor Seating (3)
- 6** Gumbo Limbo  
Covered Seating
- 7** Heads Up Bar  
Frozen Specialty Drinks, Cocktails & Beer
- 8** Grouper  
Covered Seating
- 9** Sand Bar  
Frozen Specialty Drinks, Cocktails & Beer
- 10** Cookie's Too BBQ
- 11** Castaway Air Bar  
Frozen Specialty Drinks, Cocktails & Beer

## MERCHANDISE

- 12** She Sells Sea Shells  
and Everything Else  
Castaway Cay Logo Merchandise
- 14** Buy the Seashore  
Castaway Cay Logo Merchandise

- 15** Bahamian Retail  
Bahamian Arts & Crafts

## THIS AND THAT

- 16** Kargo Handling Tram Stop
- 17** Scuttle's Cove Tram Stop
- 18** Pelican Point Tram Stop
- 19** Serenity Bay Tram Stop
- +** First Aid
- ♿** Restrooms & Outdoor Showers
- 📷** Fun Photo Opportunities
- 🚲** Bike/Nature Trail

Morning	8:30	8:45	9:00	9:15	9:30	9:45	10:00	10:15	10:30	10:45	11:00	11:15	11:30	11:45	12:00	12:15	12:30	12:45	1:00	1:15	1:30	
FUNNEL VISION	Lilo & Stitch (PG) Funnel Vision						Pixar Shorts (G) Funnel Vision						Finding Nemo (G) Funnel Vision									
BUENA VISTA THEATRE	Frankenweenie <b>DOLBY 3D</b> (PG) Duration: 1 Hour 24 Minutes <Starts at 8:00 a.m.						Oz The Great and Powerful <b>DOLBY 3D</b> (PG) - With Open Captioning Duration: 2 Hours 07 Minutes						Wreck-It Ralph (PG) Duration: 1 Hour 53 Minutes >2:23 p.m.									
CHARACTER	Donald Post Office		Captain Jack Sparrow Marge's Barges		Goofy Rustmore		Donald Post Office		Pluto Scuttles		Chip & Dale Post Office		Minnie Rustmore		Character Dance Party Gazebo							
FUN FOR ALL AGES	runDisney: Castaway Cay 5K (12+) Meet in The Tube (Departs at 9:30 a.m.)						Island Power Walk Meet on the pier by the showers						Crab Races Gazebo 1		Crab Races Gazebo 2		Basketball Free Throw In Da Shade Game Pavilion				Family Whale Dig Monstro Point	
	Open House Disney's Oceaneer Club						Open House Disney's Oceaneer Lab															
ADULTS	Friends of Bill W. Outlook, Deck 14, Mid						Yoga on the Beach Serenity Bay						Club 18*21 - Basketball Free Throw In Da Shade Game Pavilion									
VIBE 14-17 YEARS OLD	Meet At Teen Hideout						Beach Volleyball						Ping Pong						Sand Soccer			
EDGE 11-14 YEARS OLD	Meet At Marge's Barges						Meet At In Da Shade		Soccer		Lunch at Cookies Too		Pelican Plunge Fun									
SCUTTLES COVE	Sand Crafts		Water Relays		GAGA Ball		Build a Sand Castle		Lunch		Sand Soccer		Caribbean Beach Party									
OCEANEER LAB 3-12 YEARS OLD	Open House																					
OCEANEER CLUB 3-12 YEARS OLD	Open House																					
OUT AND ABOUT													Family Whale Dig Monstro Point									

Afternoon	1:45	2:00	2:15	2:30	2:45	3:00	3:15	3:30	3:45	4:00	4:15	4:30	4:45	5:00	5:15	5:30	5:45	6:00	6:15	6:30	6:45
FUNNEL VISION	Toy Story 3 (G) Funnel Vision						Cars 2 (G) Funnel Vision						Up (PG) Funnel Vision								
BUENA VISTA THEATRE	Wreck-It Ralph (PG) <Starts at 12:30 p.m.						Oz The Great and Powerful <b>DOLBY 3D</b> (PG) Duration: 2 Hours 07 Minutes						DisneyNature: Wings of Life (G) Duration: 1 Hour 17 Minutes >7:17 p.m.								
CHARACTER	Chip & Dale Gangway		Cpt. Hook Gangway		Goofy Gangway		Donald Dk 4, Mid		Tiana Lobby Atrium												
FUN FOR ALL AGES	Open House Disney's Oceaneer Lab						SEA VU! DEAL SOON! Lobby Atrium						Playhouse D Lounge D Lounge		Disney Vacation Club Group Preview The Tube				Jewish Sabbath Outlook, Deck 14, Mid		
	Live Guitar with John Kevish Island Gazebo 1						Live Music with The Switch Deck 12, Forward		Live Music with The Switch Deck 12, Forward		Live Piano with Gayla Smith Lobby Atrium		DisneyNature: Wings of Life (G) Walt Disney Theatre								
ADULTS	Fab Abs Senses Fitness Center						Beer Tasting (21+) O'Gills Pub (Nom. Fee, Pre Book)														
VIBE 14-17 YEARS OLD	Soccer		Capture the Flag		Dream Now! Sea Howl - Animal, Science and Environment		Chillin' in Vibe		Girls Chill												
EDGE 11-14 YEARS OLD	Pelican Plunge		Hangin' at Teen Hideout		Vibe Sun Deck Party		Catch & Push		Ball Games		Disney Animation: Persistence of Vision		Four Square								
SCUTTLES COVE	Caribbean Beach Party		Vacation Crafts																		
OCEANEER LAB 3-12 YEARS OLD	Open House						Open for Secured Activities						Youth Dinner		Parachute Games		Anyone Can Cook				
OCEANEER CLUB 3-12 YEARS OLD													Wii Challenge		Magic Playfloor						
OUT AND ABOUT	Family Whale Dig Monstro PE																				

Evening	7:00	7:15	7:30	7:45	8:00	8:15	8:30	8:45	9:00	9:15	9:30	9:45	10:00	10:15	10:30	10:45	11:00	11:15	11:30	11:45	12:00	
FUNNEL VISION	Old Dogs (PG) Funnel Vision						The Muppets (PG) Funnel Vision						Oz The Great and Powerful (PG) Duration: 2 Hours 07 Minutes >12:52 a.m.									
BUENA VISTA THEATRE	Goofy Preludes						Minnie Dk 4, Mid		Snow White Preludes		SEA VU! DEAL SOON! Lobby Atrium											
FUN FOR ALL AGES	Family Dance Party The Tube						Family Talent Show D Lounge		Live Music with June Gypsies Lobby Atrium		Live Music with June Gypsies Lobby Atrium		Live Music with June Gypsies Lobby Atrium		Farewell Karaoke D Lounge		Battle of the Sexes The Tube		Adult Cabaret: Taylor Mason Ventriloquist The Tube		Goin' Underground with DJ Brandon The Tube	
ADULTS	Live Guitar with John Kevish O'Gills Pub						Live Piano with Gayla Smith La Piazza		Club 18*21 O'Gills Pub		Farewell		Adult Cabaret: Taylor Mason Ventriloquist The Tube		Goin' Underground with DJ Brandon The Tube							
VIBE 14-17 YEARS OLD	Create A Memory Book		Flubber		Smoothie Time		Open House		Zombified Premiere		Final Farewell											
EDGE 11-14 YEARS OLD	Four Square		Gender Wars Final		Create A Memory Book		That's Hilarious		Know Your Counselor?		Dance Party											
OCEANEER LAB 3-12 YEARS OLD	Stitch's Adventure Squad		Super Sloppy Science - Flubber		Bingo		Magic Show		GAGA Ball		Magic Playfloor		Dance Party									
OCEANEER CLUB 3-12 YEARS OLD	Create A Mask		Create a Postcard		Pictionary																	
OUT AND ABOUT	Create a Postcard		Dance Party		Cruisin' with Crush		Journey to Neverland		Ball Games		Movie Time											
	Mini Golf Tournament Goofy Golf																					

Symbol for activities that will be repeated during the cruise

Youth Activities Open House

FOLD

Fold along the dotted lines and take me with you so you don't miss any of the fun!

FOLD

IN THE SPOTLIGHT SERIES

CREATE & INVENT SERIES

JUMP UP! SERIES

CLUBHOUSE SERIES

STORYBOOK SERIES

FRIDAY, APRIL 19, 2013 - CASTAWAY CAY

# BUENA VISTA THEATRE

DOLBY 3D - Open Captioning



8:00 a.m. Duration: 1 hr 24 min Rating: PG	10:00 a.m. Duration: 2 hr 07 min Rating: PG	12:30 p.m. Duration: 1 hr 53 min Rating: PG	3:00 p.m. Duration: 2 hr 07 min Rating: PG	6:00 p.m. & 8:30 p.m. Duration: 1 hr 17 min Rating: G	10:45 p.m. Duration: 2 hr 07 min Rating: PG
--	---	---	--	---	---

## GOOFY'S SPORTS Digital Simulators

**Sports Simulator** (Basketball, Baseball, Football, Hockey, or Soccer) \$12 / half hr, \$20 / hr.  
**Golf Simulator** \$25 / half hr, \$45 / hr

Reservations can be made at the Port Adventures Desk, Deck 5, Midship or at the Simulators, Deck 13, Aft.

## Character Appearances

### DONALD DUCK

Post Office  
9:30 a.m. & 10:30 a.m.  
Deck 4, Balcony - 5:30 p.m.

### PLUTO

Mt. Rustmore - 9:45 a.m.  
Scuttle's Cove - 10:45 a.m.

### CAPTAIN JACK SPARROW

Marge's Barges - 9:45 a.m.  
Pelican Point Tram Stop  
11:00 a.m.

### MICKEY MOUSE

Scuttle's Cove - 9:45 a.m.  
Mt. Rustmore - 10:45 a.m.  
Deck 4, Balcony - 8:00 p.m.

### CHIP & DALE

Post Office  
10:00 a.m. & 11:00 a.m.  
Gangway - 2:30 p.m.

### GOOFY

Mt. Rustmore - 10:15 a.m.  
Scuttle's Cove - 11:15 a.m.  
Gangway - 3:30 p.m.  
Preludes - 7:15 p.m.

### MINNIE MOUSE

Scuttle's Cove - 10:15 a.m.  
Mt. Rustmore - 11:15 a.m.  
Deck 4, Balcony - 7:30 p.m.

### CHARACTER DANCE PARTY

Island Gazebo 1 - 12:15 p.m.

### CAPTAIN HOOK

Gangway - 3:00 p.m.

### SEA YA REAL SOON

Lobby Atrium  
4:30 p.m. & 10:15 p.m.

### PRINCESS TIANA

Lobby Atrium - 5:45 p.m.

### SNOW WHITE

Preludes - 7:45 p.m.

Don't forget your Camera to capture those magical moments!  
For details of daily Disney character appearances, refer to the character line in your Navigator Grid.

## YOUTH ACTIVITIES THEMED EXPERIENCES

**CLUBHOUSE SERIES** focuses on movement and features content which appeals to younger children.

**JUMP UP! SERIES** includes large ground games & movement-oriented activities.

**IN THE SPOTLIGHT SERIES** focuses on children's stage presence with lots of activities and enthusiasm.

**STORYBOOK SERIES** is designed with a strong connection to the Disney classic stories.

**CREATE & INVENT SERIES** will have a tactile focus allowing children to create and admire their work.

**SOLVE IT! SERIES** are less active, but will challenge children with problem/solutions-based activities.

### YOUTH ACTIVITIES OPEN HOUSE

A non-secured program with activities for families, adults and children of all ages to enjoy together.

## SHIP DIRECTORY

### YOUTH ACTIVITIES

DISNEY'S OCEANEER CLUB	DECK 5, MID	4:30 PM - 12:00 MID
DISNEY'S OCEANEER LAB	DECK 5, MID	4:00 PM - 12:00 MID
EDGE	DECK 13, MID	4:30 PM - 12:00 MID
VIBE	DECK 4, FWD	4:30 PM - 1:00 AM
IT'S A SMALL WORLD NURSERY	DECK 5, MID	9:00 AM - 11:00 PM

### RECREATION

AQUADUCK	DECK 12, MID	1:00 PM - 10:00 PM
AQUALAB	DECK 12, AFT	1:00 PM - 7:00 PM
DONALD'S POOL	DECK 11, MID	6:00 AM - 12:00 MID
GOLF/SPORTS SIMULATORS	DECK 13, AFT	1:00 PM - 6:00 PM
GOOFY GOLF	DECK 13, AFT	8:00 AM - 10:00 PM
GOOFY'S SPORTS DECK	DECK 13, AFT	8:00 AM - 6:00 PM
MARGE'S BARGES	CASTAWAY CAY	9:00 AM - 3:30 PM
MICKEY'S POOL	DECK 11, MID	6:00 AM - 11:00 PM
MICKEY'S SLIDE	DECK 11, MID	10:00 AM - 6:00 PM
MIDSHIP DETECTIVE AGENCY	DECK 2 & 5, MID	9:00 AM - 10:00 PM
NEMO'S REEF	DECK 11, MID	10:00 AM - 6:00 PM
PORT ADVENTURES DESK	DECK 5, MID	
QUIET COVE POOL	DECK 11, FWD	6:00 AM - 10:00 PM
SATELLITE FALLS	DECK 13, FWD	6:00 AM - 6:00 PM
SENSES FITNESS CENTER	DECK 11, FWD	6:30 AM - 10:00 PM

### GENERAL INFORMATION

ARR-CADE	DECK 11, AFT	24 HOURS
DISNEY VACATION CLUB	DECK 4, MID	6:00 PM - 10:00 PM
FUTURE CRUISE SALES DESK	DECK 4, MID	9:00 AM - 10:00 AM 4:00 PM - 6:00 PM 7:30 PM - 10:00 PM
GUEST SERVICES	DECK 3, MID	24 HOURS
MEDICAL HEALTH CENTER	DECK 1, FWD	9:30 AM - 11:00 AM 4:30 PM - 7:00 PM
PORT & SHOPPING DESK	DECK 4, MID	
PRELUDES	DECK 3, FWD	5:45 PM - 6:30 PM 8:00 PM - 8:45 PM
SENSES SPA AND SALON	DECK 11, FWD	8:00 AM - 10:00 PM
SHUTTERS PHOTO GALLERY	DECK 4, MID	3:30 PM - 11:30 PM
SHUTTERS DIGITAL	DECK 4, MID	12:00 MID - 11:30 PM

### SHOPPING

BIBBIDI BOBBIDI BOUTIQUE	DECK 5, MID	9:00 AM - 11:00 AM 3:30 PM - 9:00 PM
MICKEY'S MAINSAIL	DECK 3, FWD	5:30 PM - 11:00 PM
QUACKS	DECK 11, MID	
SEA TREASURES	DECK 3, FWD	5:30 PM - 11:00 PM
VISTA GALLERY	DECK 4, MID	5:30 PM - 10:00 PM
WHITECAPS	DECK 3, FWD	5:30 PM - 11:00 PM
WHOZITS & WHATZITS	DECK 11, MID	

DINNER MENU

Animator's Palate: Sea Ya' Real Soon  
Enchanted Garden: Sea Ya' Real Soon  
Royal Court: Sea Ya' Real Soon  
Dining Times: 5:45 p.m. & 8:15 p.m.

DRINK OF THE DAY

Stringray (Alcoholic)  
Parrot Song (Non-Alcoholic)

WEATHER FORECAST

Friday: Partly Sunny  
High: 79°F/26°C  
Saturday: Cloudy  
High: 73°F/23°C

Evening Attire: Cruise Casual

## DINING & LOUNGES

### BREAKFAST

CABANAS CONTINENTAL	DECK 11, AFT	7:00 AM - 7:30 AM
CABANAS	DECK 11, AFT	7:30 AM - 10:45 AM
ENCHANTED GARDEN	DECK 2, MID	8:30 AM - 10:30 AM
ROYAL COURT	DECK 3, MID	8:00 AM - 9:30 AM

### LUNCH

CABANAS	DECK 11, AFT	12:00 PM - 1:30 PM
COOKIES	CASTAWAY CAY	11:30 AM - 2:00 PM
COOKIES TOO	CASTAWAY CAY	11:30 AM - 2:00 PM
FILLMORE'S FAVORITES	DECK 11, MID	12:00 PM - 6:00 PM
LUIGI'S PIZZA	DECK 11, MID	12:00 PM - 6:00 PM
TOW MATER'S GRILL	DECK 11, MID	12:00 PM - 10:00 PM

### DINNER

ANIMATOR'S PALATE	DECK 3, AFT	5:45 PM & 8:15 PM
ENCHANTED GARDEN	DECK 2, MID	5:45 PM & 8:15 PM
ROYAL COURT	DECK 3, MID	5:45 PM & 8:15 PM
PALO (18+) (RESERVATIONS REQ. & NOM. FEE APPLIES)	DECK 12, AFT	6:00 PM - 8:30 PM
REMY (18+) (RESERVATIONS REQ. & NOM. FEE APPLIES)	DECK 12, AFT	6:00 PM - 8:30 PM

### LATE NIGHT SNACKS

LA PIAZZA (18+)	DECK 4, AFT	10:45 PM - 11:45 PM
LUIGI'S PIZZA	DECK 11, MID	9:30 PM - 12:00 MID

### ADDED FEATURES

BEVERAGE STATION	DECK 11, MID	24 HOURS
EYE SCREAM	DECK 11, MID	11:00 AM - 11:00 PM
ROOM SERVICE	DIAL 0	CLOSES AT 1:30 AM

### ENTERTAINMENT - LOUNGES - BARS

Adults must be 21 and older to consume alcoholic beverages.

BON VOYAGE	DECK 3, MID	4:00 PM - 11:00 PM
COVE BAR (18+)	DECK 11, FWD	11:30 AM - 10:30 PM
COVE CAFE (18+)	DECK 11, FWD	7:00 AM - 12:00 MID
CURRENTS (18+)	DECK 13, FWD	12:00 PM - 11:00 PM
D LOUNGE	DECK 4, MID	SHOWTIMES
FROZONE TREATS	DECK 11, MID	11:00 AM - 10:30 PM
LA PIAZZA	DECK 4, AFT	4:00 PM - 12:00 MID
MERIDIAN (18+)	DECK 12, AFT	5:00 PM - 12:00 MID
O'GILLS PUB (18+ AFTER 9:00 PM)	DECK 4, AFT	4:00 PM - 12:00 MID
OQH LA LA (18+)	DECK 4, AFT	5:00 PM - 12:00 MID
OUTLOOK	DECK 14, MID	SUNSET TIMES
SKYLINE (18+)	DECK 4, AFT	5:00 PM - 12:00 MID
THE TUBE (18+)	DECK 4, AFT	10:00 PM - 1:00 AM
VISTA CAFE	DECK 4, MID	7:30 AM - 11:00 PM
WAVES	DECK 12, AFT	2:30 PM - 6:00 PM

### CASTAWAY CAY BARS

CONCHED OUT BAR	CASTAWAY CAY	9:00 AM - 4:00 PM
CASTAWAY AIR BAR	CASTAWAY CAY	9:00 AM - 3:30 PM
HEADS UP BAR	CASTAWAY CAY	9:00 AM - 3:30 PM
SAND BAR	CASTAWAY CAY	9:00 AM - 4:00 PM

Consumers who order raw or partially cooked, ready-to-eat food of animal origin, are hereby informed that the food is not sufficiently cooked to ensure its safety.

### IMPORTANT NUMBERS

Fire/Security: 7-3001  
Medical EMERGENCY: 7-3000  
Health Center: 7-1923

All Ashore:  
Approx. 9:30 a.m.

All Aboard:  
4:30 p.m.

# WELCOME TO PORT CANAVERAL

## IMPORTANT INFORMATION ABOUT THE DEBARKATION PROCEDURE

Dear Guest,

As your cruise draws to an end, it has been our pleasure to have you onboard the last 2,163 nautical miles of this Western Caribbean cruise. This letter will detail all the information you need to know to make your final debarkation process in Port Canaveral as smooth as possible.

### EXPRESS WALK-OFF

To participate in this program, simply pack your bags at your convenience and keep them inside your stateroom until the morning of departure. Once the ship has been cleared by the local authorities and the Express Walk-Off should start at approximately 7:00 a.m., you may debark the ship with your luggage. Please note that no assistance with luggage is provided for this option. A buffet breakfast will be available for you at Cabanas, Deck 11, Aft.

Guests who opt for Express Walk-Off must be within their Customs allowance and not owe any duty.

Express Walk-Off is not available for those participating in Onboard Airline Check-In.

### BREAKFAST DINING ROTATION

Breakfast will be served in the same restaurant where you were scheduled to dine on the last evening of your cruise.

Guests on Main Seating: 6:45 a.m.

Guests on Second Seating: 8:00 a.m.

Please attend breakfast hours promptly.  
Please note that room service is not available on debarkation morning.

Be sure to remember to bring your day bag with you to the restaurant as you will be asked to debark the ship following breakfast.

Cove Cafe will be available for speciality coffees from 6:30 a.m. to 8:30 a.m. Deck 11, Forward.

### LUGGAGE

Character, color coded luggage tags are provided to assist you in locating your luggage in the Port Canaveral Terminal. Please write your stateroom number, name, address and number of bags on these tags. Remove any old airline or Disney tags. Attach the new tags to your luggage and place it outside your stateroom between 8:30 p.m. and 10:30 p.m. on the last night of your voyage for complimentary delivery to the ship's terminal. Any luggage not placed outside the stateroom by 10:30 p.m. must be hand carried by the Guest when debarking the ship.

We suggest that you keep all valuables, such as the items listed below, in your day bag to be kept with you throughout your journey:

- *Key to the World Card*
- Jewelry
- Medicines
- Cellular phones/ Cameras/ Laptop computers/ Tablets
- Passport/Birth Certificate
- Cash
- Medicines

As you will not have access to the luggage you place outside your stateroom the night before you debark, please remember not to pack any items you will need on debarkation morning (i.e. clothing). Your luggage will be placed in colored zones, according to your stateroom number, for easy recognition in the port terminal. Porters will be available in the terminal to assist as you proceed through U.S. Customs and Border Protection. The porters off the ship providing this assistance are employed by an independent company, so it is customary to provide a gratuity in recognition of their service.

## U.S. CUSTOMS & BORDER PROTECTION

After collecting your luggage, all Guests (U.S. and non-U.S.) in your party must present themselves for inspection with U.S. Customs and Border Protection. Guests are required to have proof of citizenship and a U.S. Customs Declaration form (one per household) completed and in hand, ready for inspection. To expedite the passport control process, please have the head of household present all documentation and the U.S. Customs Declaration form together to the U.S. Customs and Border Protection Officer. Non-U.S. Guests entering on the Visa Waiver Program must present their passports and the ESTA approval form.

It is very important that you do not pack any of your citizenship documentation.

In accordance with Federal law, NO fruits, food stuffs or plant materials may be brought back into the United States. Heavy fines may be imposed on Guests found with these items. Green Palm handicrafts are discouraged for possible red mite infestation.

Non-U.S. Guests with Travel Visas must present their passports and the completed white I-94 form.

US Customs Declaration forms are available in multiple languages at the Guest Services Desk on Deck 3, Midship.

## YOUTH ACTIVITIES

Please remember to return your child's Mickey Band to Disney's *Oceaneer Club* or Disney's *Oceaneer Lab* on Deck 5, midship, before Midnight on the last night of your cruise.

## SHUTTERS PHOTO GALLERY

Shutters will be open from 7:00 a.m. to 9:00 a.m. on debark morning for photo and CD sales only.

All Other Merchandise Shops Will Be Closed

## LOST AND FOUND

For your convenience, all lost and found items from your voyage will be located at the Lost and Found desk in the luggage hall inside the terminal.

## SETTLING YOUR ONBOARD ACCOUNT

If you placed a credit card on your account, there is no need to visit Guest Services, as your account will automatically be charged. If you are on a cash account, please settle your account prior to 7:00 a.m. on debarkation morning. A copy of your shipboard account will be delivered to your stateroom by 7:00 a.m. on debarkation morning.

## U.S. CUSTOMS ALLOWANCE

- Total Duty Free Allowance per person is \$800. Your total purchases in Grand Cayman, Costa Maya & Cozumel or on the ship may be combined in any way to make up the \$800 limit per person.
- Total Liquor Allowance is per person over 21 years of age
  - One liter
- Tobacco Allowance per person over 18 years of age
  - One carton (200 cigarettes) and 100 cigars

NOTE: In accordance with Federal Law, bringing any items manufactured in Cuba into the United States is prohibited, *INCLUDING* Cuban Cigars.

## TRANSPORTATION

To : Orlando International Airport

• Continuous bus transfers will be available upon arrival in Port Canaveral for all Guests who have purchased air or ground transfers through *Disney Cruise Line*®.

You will need to claim your luggage in the terminal building and proceed through U.S. Customs after which time you and your luggage will board the same bus to the Orlando International Airport. Airline check-in will be done at the airport. You will need to present your Key to the World Card to board the bus.

• If you are participating in the Onboard Airline Check-in program, please refer to the separate instructions provided in your boarding pass information packet that will be delivered to your stateroom.

• If you have a flight prior to 1:00 p.m., you must debark the ship prior to than 8:00 a.m. Failure to do so will result in your bags being pulled and requiring you to check in directly at the airport.

To: *The Walt Disney World Resort*®

For Guests continuing their vacation with transfers to *Walt Disney Resort* can debark the ship between 7:30 a.m. and no later than 9:00 a.m. Motor coaches depart every 30 minutes.

We wish you a safe journey home and look forward to seeing you on board for another magical *Disney Cruise Line* voyage. As a reminder, we kindly ask that you deposit your comment cards in the boxes provided outside each restaurant. Please also ensure that your in-room safe is left OPEN when you leave your stateroom.

All Guests must vacate their stateroom by 8:00 a.m.

All Guests must debark the ship by 9:00 a.m.