

# PERSONAL NAVIGATOR



WEDNESDAY, AUGUST 15, 2012

Sunrise: 6:01 a.m. Sunset: 6:46 p.m.  
 Evening Attire: Cruise Casual  
 All Ashore: 7:45 a.m.  
 All Aboard: 4:00 p.m.

Wednesday: Sunny High: 80°F/27°C  
 Thursday: Partly Cloudy High: 88°F/31°C


ST. THOMAS


## MOVIE PremEAR

# Disney THE ODD LIFE OF TIMOTHY GREEN



He's a force of nature.

WALT DISNEY THEATRE  
 Decks 3 & 4 Forward  
 5:30 p.m. & 8:15 p.m.   
 Rating: PG  
 Run Time: 1 hr 40 mins.

 Assistance available at the entrance to the Walt Disney Theatre 30 minutes prior to show time.

### St. Thomas

#### Port Information

Once largely occupied by Dutch-owned sugar cane plantations and pirates of the Caribbean, St. Thomas and St. John of the U.S. Virgin Islands are some of the most popular tropical tourist destinations in the world. A destination that boasts so many sites for sport, relaxation and leisure has a culture that is still influenced in ways by its agricultural and native past.

Two-thirds of the island of St. John, a short ferry ride from St. Thomas, is a National Park. Not only is this island the most beautiful it is also the most serene, surrounded by shimmering bays and beaches.

A place so celebrated today for its pristine tranquility and peaceful way of life was—for 150 years—a notorious pirate post before the islands were conquered by the Dutch West Indian Company.

The islands have seen a steady rise in tourism since, and today, there is an entire world of leisure and adventure to explore on St. Thomas and St. John.



Get ready for a jammin', slammin', splash splashin' good time at the new Disney Channel Poolside Jam Fest at Sea! Imagine all of your favorite Disney Channel music stars coming together for an afternoon of contests, great music, and hot videos all under the Caribbean sun!  
**Deck Stage,  
 Deck 11, Midship,  
 4:15 p.m.**

### Don't Miss:

**Art of The Theme Show Tour**  
*Meet at Meridian (18+), Deck 12, Aft - 2:30 p.m.*  
 Join us on a guided ship tour and discover the key ingredients that make the Disney Fantasy cruise ship one-of-a-kind.

**Disney Animation: Persistence of Vision**  
*D Lounge, Deck 4, Midship - 4:00 p.m.*  
 Go behind the scenes at Walt Disney Animation Studios and learn the principles that make animation work, and try your hand at creating your own easy animation demonstration in this fun and fascinating enrichment program.

**Viva Europa**  
*Europa (18+), Deck 4, Aft - 10:15 p.m.*  
 Join us as we give you an entertaining taste of Europe. From Italy, France, to Ireland and London and best of all you won't even have to leave the ship!

**Saludos Amigos Fiesta**  
*D Lounge, Deck 4, Midship - 10:15 p.m.*  
 Bring the family out to this interactive dance party featuring The Three Amigos. We will party with Donald Duck, learn Salsa, Merengue and have a Latin good time!

### DOCKING

The ship docks at Havensight Mall Dock, which is also known as West Indian Company Dock.



### IMPORTANT INFORMATION

Please check your tour tickets for meeting times and locations. Visit the Port Adventures Desk, Deck 5, Midship for any questions.

**DINNER MENU**  
 Animator's Palate : Prince and Princess Menu  
 Enchanted Garden : Prince and Princess Menu  
 Royal Court : Prince and Princess Menu

**DRINK OF THE DAY**  
 Sunken Treasure (Alcoholic)  
 Princess Delight (Non Alcoholic)

**IMPORTANT NUMBERS**  
 Fire/Security: 7-3001  
 Medical Emergency: 7-3000  
 Health Center: 7-1923

# FAMILY ACTIVITY HIGHLIGHTS

## CRUISIN' FOR TRIVIA

*D Lounge, Deck 4, Midship - 3:15 p.m.*

Test your general knowledge with our Cruise Staff in this fun trivia.

## SUNSHINE ACOUSTICS WITH JOHN KEVISH

*Deck 12, Forward, Deck 12 - 3:30 p.m. & 4:30 p.m.*

Join John Kevish as he plays live guitar for your listening pleasure.

## DISNEY ANIMATION: PERSISTENCE OF VISION

*D Lounge, Deck 4, Midship - 4:00 p.m.*

Go behind the scenes at Walt Disney Animation Studios and learn the principles that make animation work, and try your hand at creating your own easy animation demonstration in this fun and fascinating enrichment program.

## JAM FEST AT SEA

*Deck Stage, Deck 11 - 4:15 p.m.*

Get ready for a jammin', slammin', splish splashin' good time at the new Disney Channel Poolside Jam Fest at Sea! Imagine all of your favorite Disney Channel music stars coming together for an afternoon of contests, great music, and hot video's all under the Caribbean sun!

## OFFICER PIN TRADING

*Preludes, Deck 3, Forward - 7:15 p.m.*

Come trade pins with the officers of the Disney Fantasy.

## FAMILY CABARET: DAVID WILLIAMSON

*The Tube, Deck 4, Aft - 7:30 p.m.*

Featuring the Comedy & Magic of David Williamson as he entertains the entire family in this Cabaret Style show.

## DISNEY TRIVIA

*D Lounge, Deck 4, Midship - 9:45 p.m.*

Navigate your way through another round of questions to test how much you really know about Disney.

## SALUDOS AMIGOS FIESTA

*D Lounge, Deck 4, Midship - 10:15 p.m.*

Bring the family out to this interactive dance party featuring The Three Amigos. We will party with Donald Duck, learn Salsa, Merengue and have a Latin good time!

# ADULT ACTIVITY HIGHLIGHTS

## SENSES SPA FITNESS CLASSES & SEMINARS

*Sunrise Stretch - Senses Fitness Center - 7:00 a.m.*

*Fab Abs - Senses Fitness Center - 7:30 a.m. & 5:00 p.m.*

*Body Sculpt Boot Camp (Nom. Fee) - Senses Fitness Center - 8:00 a.m.*

*Core Conditioning Pilates - Senses Fitness Center - 4:00 p.m.*

*Facial Workshop - Outlook - 5:00 p.m.*



## TASTING CLASSES

*Whiskey Tasting (21+) (Nom. Fee) - Cove Cafe - 10:30 p.m.*

Please make reservations for tastings at Guest Services for a nominal fee.

Tasting Seminars are only for Guests 21 and Older.

CLUB  
18\*21

## MINI GOLF

*Goofy Golf, Deck 13, Aft - 4:00 p.m.*

## MIXER

*O'Gills Pub, Deck 4, Aft - 10:00 p.m.*



## ESPN DREAM TEAM DRAFT DAY - BASKETBALL

*O'Gills Pub, Deck 4, Aft - 5:00 p.m.*

Join the "Commissioner" and engage in this interactive fantasy basketball draft unlike anything you've ever seen! Can YOU draft the greatest basketball team of All-Time?

## LIVE PIANO WITH TIM ADSHEAD

*Outlook, Deck 14, Midship - 7:30 p.m., 9:45 p.m. & 10:45 p.m.*

Join Tim Adshead as he plays live for your listening pleasure, including special sets: Piano Tribute to Billy Joel at 7:30 p.m. and Great British Classics at 9:45 p.m.

## LIVE MUSIC WITH FINE WHINES

*La Piazza, Deck 4, Aft - 7:30 p.m., 9:45 p.m. & 11:00 p.m.*

Join Fine Whines as they play live for your listening pleasure.

## LIVE GUITAR WITH JOHN KEVISH

*O'Gills Pub, Deck 4, Aft - 9:45 p.m. & 11:00 p.m.*

Join John Kevish he plays live guitar for your listening pleasure, including a special set dedicated to The Beatles at 11:00 p.m.



## VIVA EUROPA

*Europa, Deck 4, Aft - 10:15 p.m.*

Join us as we give you an entertaining taste of Europe. From Italy, France, to Ireland and London and best of all you won't even have to leave the ship!



# MEGA RAFFLE JACKPOT BINGO

**D Lounge,  
Deck 4, Midship  
Card Sales - 7:15 pm  
Game Starts - 7:30 pm**



Join your Cruise Staff for family Bingo fun! Four cash prize games. Plus, great raffle prize packs to be won. Don't miss out on the fun!

# YOUTH ACTIVITY HIGHLIGHTS

## DINE & PLAY

A convenience for families dining at 8:15 p.m., our Youth Activities Counselors will be available at 9:15 p.m. at the entrance of Royal Court, Enchanted Garden and Animator's Palate dining rooms to bring registered children to join the fun in the Youth Activity areas.



**Deck 5 Midship (7-1440)**  
(3-12 years old) 7:30 a.m. - 12:00 mid

## DISNEY ANIMATION: CREATING A CHARACTER

9:15 a.m.  
Go behind the scenes at Walt Disney Animation Studios as Walt Disney himself talks about his most famous characters, then learn the basic techniques of drawing Mickey and Donald in this fun and interesting enrichment program.

## PLUTO'S PAJAMA PARTY

8:45 p.m.  
Bring the little ones in their pajamas but there will be anything but sleep when Pluto and friends host the ultimate slumber party!

**OCEANEER LAB** **Deck 5 Midship (7-1445)**  
(3-12 years old) 10:00 a.m. - 1:00 a.m.

## GAGA BALL

11:15 a.m. & 8:30 p.m.  
Come take part in this great game as you try to outlast your opponents.

## SUPER SLOPPY SCIENCE - FLUBBER

9:45 p.m.  
Join Professor Make-O-Mess in some of the most extreme experiments you will ever seen in the world of Super Sloppy Science!



**Deck 13 Midship (7-9743)**  
(11-14 years old) 10:00 a.m. - 1:00 a.m.

## ESPN DREAM TEAM DRAFT DAY - BASEBALL

1:45 p.m.  
Play ball! Join the "Commissioner" and engage in this interactive fantasy baseball draft unlike anything you've ever seen! Can YOU draft the greatest baseball team of All-Time?

## ANYONE CAN COOK: CUPCAKES

7:00 p.m.  
Anyone can cook as we work together to create some of our favorite treats. From our galley to yours; join our Chef as they show you how to create cupcakes!



**Entrance on Deck 4 Forward (7-9418)**  
(14-17 years old) 12:00 p.m. - 2:00 a.m.

## ZOMBIFIED

6:00 p.m.  
A big movie producer is looking for a few good zombies to help him film the finale to his latest masterpiece, Zombified.

## GHOST VOYAGERS

11:30 p.m.  
The ship has come upon some mysterious waters and strange things are afoot. Join a team of paranormal experts to help investigate the area and track down any evidence of ghostly beings on the ship.

# BUENA VISTA THEATRE

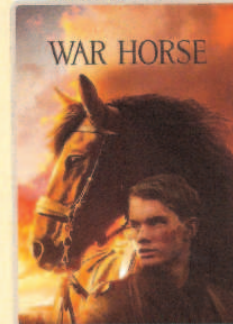
## Today's Movies



11:00 a.m.  
Run Time: 2 hr 22 min  
Rating: PG-13



2:30 p.m.  
Run Time: 1 hr 41 min  
Rating: PG



5:00 p.m. & 8:00 p.m.  
Run Time: 2 hr 26 min  
Rating: PG-13



11:00 p.m.  
Run Time: 1 hr 40 min  
Rating: PG



Bring the family out to this interactive dance party featuring The Three Amigos. We will party with Donald Duck, learn Salsa, Merengue and have a Latin good time!

**D Lounge,**  
**Deck 4, Midship,**  
**10:15 p.m.**



Have you been told you are full of useless information about pop culture? If the answer is "Yes", then you have what it takes to play the high energy game show all about the world of Pop!

**The Tube (18+),**  
**Deck 4, Aft,**  
**10:30 p.m.**

## YOUTH ACTIVITIES OPEN HOUSE

Open House is an opportunity for all to come and participate in a variety of exciting activities and free time in It's a Small World Nursery, Oceaneer Club, Lab, Edge and Vibe throughout the cruise. During these times secured programming will still be offered in the other venue for those looking to check their children into care.

Oceaneer Lab: 10:00 a.m. - 11:15 a.m.

Vibe: 11:00 a.m. - 12:00 p.m.

# MORE TO ENJOY WHILE ONBOARD



## PLAN YOUR NEXT CRUISE

We invite you to take advantage of our exclusive Onboard Offer so you can return to paradise on Disney Cruise Line. Visit your Onboard Sales Manager on Deck 4, Midship, or call 7-2848 before the end of this cruise to find out more.



## ADVENTURES BY DISNEY

Join us for a special presentation tomorrow to learn what traveling with Adventures by Disney is all about. See our Adventure Guide on Deck 4, Midship, for more information and take advantage of a 10% discount off your next adventure!



## PORT & SHOPPING INFORMATION

Shopping Guide Johan will be on the gangway from 8:00 a.m. to 9:00 a.m. to answer any last minute St. Thomas shopping questions. Make sure to bring your shopping maps, VIP cards and shopping coupons!

## ONBOARD AIRLINE CHECK IN

If you would like to have your boarding passes printed for you onboard and have your luggage taken to the airport for you, register by midnight tonight. If you have Disney Cruise Line airport transfer to Orlando International Airport and fly with one of the participating airlines. Stop at Guest Services, Deck 3, Midship.

## SURF @ SEA

\$0.75 per minute, or save money by buying blocks of time. \$55.00 for 100 minutes, \$100.00 for 250 minutes and \$150.00 for 500 minutes. Wireless information sheets are available at Guest Services, Deck 3, Midship.

*Please note: Due to satellite connectivity, onboard internet service will be noticeably slower than you may be accustomed to and may at times be interrupted or unavailable.*

## ON DEMAND TV

Watch Disney movies, Hollywood features, ABC Shows, and even captioned content, plus much more "On Demand" for **FREE** in the comfort of your stateroom! Bookmark your movie and come back to watch it later. Press MENU on your stateroom television remote control, and follow the prompts.

**SENSES SPA & SALON**

### PAMPER PACKAGE

- 50 minute Full Body Massage
- Foot & Ankle Massage
- Indian Scalp Massage
- 25 Minute Booster Facial

ONLY \$149  
Call Senses Spa & Salon, 7-1465

## Disney Cruise Line PORT ADVENTURES

Your Port Adventures Desk is open this morning for your last minute St. Thomas reservations. Let us take care of everything from Magen's Bay to island tours to St. John where you can sail and snorkel - your tour can even leave you time for shopping at the end! Don't forget to reserve space for the trip to St. John and its beautiful Trunk Bay beach. For the more adventurous, join us for one of the many Catamaran Sail and Snorkel excursions. Your friendly Port Adventures team are here to help.

### TODAY'S SHOPPING SPECIAL

Sophia Fiori Diamond extravaganza, stop by Whitecaps and meet Brent, Jeweler of the Hollywood stars.

*Sophia Fiori*

## SHOPPING

### BIBBIDI BOBBIDI BOUTIQUE

Dress like sailor Minnie in her exclusive first mate outfit complete with the red shoes, plush doll and sailor hat. Bibbidi Bobbidi Boutique, Deck 5, Midship.

### GREAT OFFERS ONBOARD

Receive a Disney Cruise Line beach towel for \$14.95 with any merchandise purchase of \$30 or more and /or receive a Disney Cruise Line duffle bag for \$19.95 with any merchandise purchase of \$50 or more. Available in Mickey's Mainsail, Sea Treasures & Whitecaps, Deck 3, Forward. Offer valid only while supplies last.

### SOPHIA FIORI DIAMOND TRUNK SHOW

Sophia Fiori, Hollywood's first choice in diamonds has boarded the Disney Fantasy to premier their new collection of white & colored diamonds worn at the Oscars, Golden Globes, Emmy and Grammy Awards. Stop by Whitecaps to view this stunning collection. Save up to 50% below U.S retail.

### GET THE PICTURE!

Do you only need a small number of digital images of your photos? We now offer two digital packages where you can choose your selected images in the comfort of your own home! Send them to friends or upload them on social media sites, the choice is yours! Please see one of our friendly Shutters staff to explain this great new product. Your photos will be available for viewing on our interactive kiosks in Shutters digital as well as in your personal photo folder in Shutters, Deck 4, Midship, Conditions applies.

*\*Please note that photos are available for viewing on our interactive photo kiosks approximately five hours after being taken and are only available for purchase during this cruise.*

### OFFICER PIN TRADING

Come and trade Pins with the Officers of the Disney Fantasy. Starting at 7:15 p.m. in Preludes, Deck 3, Forward.

### FANTASY INAUGURAL MERCHANDISE

Bring home a memory of the Disney Fantasy's Inaugural sailings. Choose from t-shirts, hats, sweatshirts, mugs and scrapbooks. Available at Sea Treasures.

### GUESS

A global brand that symbolizes a worldwide leader in the fashion industry. Choose from watches, handbags, and small leathers. Available in Whitecaps.

Due to port regulations, when the ship is docked, the stores will remain closed.

## IMPORTANT INFORMATION

**Security Notice**  
All Guests (including children) who wish to disembark the ship are required to present their Key to the World card at the gangway. A photo ID is also required for those Guests who are 18 years of age or older. Guests under the age of 18 are required to have a Parent, Guardian or other responsible adult sign an authorization form at the time it is given out if they wish to go ashore unaccompanied. Authorization forms are available at the gangways and Guest Services.  
Please Note:  
Please remember to use plenty of sunscreen & mosquito/Insect repellent when venturing ashore.

**Cold and Flu Reminder**  
Please wash hands frequently and thoroughly; particularly before meals. Contact the Health Center by dialing 7-1923, should anyone in your party become ill.  
**Corridor Quiet Hours**  
As a courtesy to all our Guests, please recognize quiet hallway hours from 10:00 p.m. till 8:00 a.m.  
**Inclement Weather**  
For the safety of all Guests, outdoor events may be changed due to unforeseen weather conditions.

**Environmental Message**  
With Disney's commitment to the Environment, please refrain from throwing anything over the Ship's side. Thank you!  
**No Reserved Seats Policy**  
As a courtesy to all our Guests, we kindly advise that the saving of seats is not permitted in the Walt Disney Theatre, and the saving of the sun loungers is not permitted on Deck 11, 12, and 13. Items left unattended will be returned to lost and found at Guest Services, Deck 3 Midship.

**Smoking**  
For the comfort of our guests the following areas are designated as Smoking areas - Promenade Deck (Deck 4), smoking is permitted Port Side, Aft only from 6:00 p.m. to 6:00 a.m.  
- Currents - Deck 13, Forward, Port Side.  
- Meridian Bar - Deck 12, Aft, Port Side, outside.  
- Smoking is permitted on stateroom verandahs. Smoking is prohibited inside all guest staterooms. Guests found smoking in their staterooms will be charged a \$250 stateroom recovery fee.

**Walt Disney Theatre**  
Theatrical performances may use artificial fog, strobe lights, pyrotechnics and other special effects. For the safety of our performers and the comfort of those around you, the use of any photography, video recording device or any electronic equipment is prohibited.  
**Verandah Safety**  
Please do not leave any combustible materials on your balcony when not present in your stateroom for safety reasons.



WEDNESDAY, AUGUST 15, 2012 - ST. THOMAS

# BUENA VISTA THEATRE



**11:00 a.m.**  
Run Time:  
2 hr 22 min  
Rating: PG-13



**2:30 p.m.**  
Run Time:  
1 hr 41 min  
Rating: PG



**5:00 p.m. & 8:00 p.m.**  
Run Time:  
2 hr 26 min  
Rating: PG-13



**11:00 p.m.**  
Run Time:  
1 hr 40 min  
Rating: PG

## Character Appearances

### MAX

Deck 13, Aft - 3:15 p.m.

### GOOFY

Deck 13, Aft - 4:15 p.m.

### TINKER BELL

Lobby Atrium  
4:30 p.m., 5:30 p.m.,  
7:30 p.m. & 9:30 p.m.

### PRINCESS AURORA

Lobby Atrium - 4:45 p.m.

### PINOCCHIO

Deck 4, Balcony - 4:45 p.m.  
Lobby Atrium - 7:30 p.m.

### MICKEY MOUSE

Lobby Atrium  
5:00 p.m., 7:15 p.m.  
& 9:30 p.m.

### CAPTAIN HOOK & MR SMEE

Deck 4, Balcony  
5:15 p.m., 7:00 p.m.  
& 10:15 p.m.

### PETER PAN

Lobby Atrium  
5:15 p.m. & 7:00 p.m.  
Deck 4, Balcony - 9:45 p.m.

### MINNIE MOUSE

Lobby Atrium  
5:30 p.m. & 10:00 p.m.

### CINDERELLA

Lobby Atrium  
5:30 p.m. & 9:45 p.m.

### ALADDIN & GENIE

Preludes - 5:45 p.m.  
Deck 4, Balcony - 8:00 p.m.  
Lobby Atrium - 10:15 p.m.

### LILO & STITCH

Deck 4, Balcony - 5:45 p.m.  
Lobby Atrium - 8:00 p.m.

### SNOW WHITE & DOPEY

Lobby Atrium  
5:45 p.m. & 9:45 p.m.  
Deck 4, Balcony - 7:30 p.m.

### DONALD DUCK

Lobby Atrium - 7:45 p.m.

### LILO & STITCH

Lobby Atrium - 9:15 p.m.

### ARIEL

Deck 4, Balcony - 9:15 p.m.

For details of daily Disney character appearances, refer to the character line in your Navigator Grid or the digital character board in the Lobby Atrium.

## YOUTH ACTIVITIES THEMED EXPERIENCES

**CLUBHOUSE SERIES**  
focuses on movement and includes large ground games & movement-oriented activities to younger children.

**JUMP UP! SERIES**  
includes large ground games & movement-oriented activities.

**WIN THE SPOTLIGHT SERIES**  
focuses on children's stage presence with lots of activities and enthusiasm.

**TOY STORY BOOK SERIES**  
is designed with a strong connection to the Disney classic stories.

**CREATE & INVENT SERIES**  
will have a tactile focus allowing children to create and admire their work.

**SOOLVE IT! SERIES**  
are less active, but will challenge children with problem/solutions-based activities.

## SHIP DIRECTORY

### YOUTH ACTIVITIES

DISNEY'S OCEANEER CLUB	DECK 5, MID	7:30 AM - 12:00 MID
DISNEY'S OCEANEER LAB	DECK 5, MID	10:00 AM - 1:00 AM
EDGE	DECK 13, MID	10:00 AM - 1:00 AM
VIBE	DECK 4, FWD	12:00 PM - 2:00 AM
IT'S A SMALL WORLD NURSERY	DECK 5, MID	7:30 AM - 11:00 PM

### RECREATION

AQUADUCK	DECK 12, MID	9:00 AM - 10:00 PM
AQUALAB	DECK 12, AFT	1:00 PM - 7:00 PM
DONALD'S POOL	DECK 11, MID	6:00 AM - 12:00 MID
GOOLF/SPORTS SIMULATORS	DECK 13, AFT	9:00 AM - 6:00 PM
GOOFLY GOLF	DECK 13, AFT	8:00 AM - 10:00 PM
GOOFLY'S SPORTS DECK	DECK 12, AFT	8:00 AM - 6:00 PM
GOOFLY'S POOL	DECK 11, MID	6:00 AM - 11:00 PM
MICKEY'S SUIDE	DECK 11, MID	9:00 AM - 6:00 PM
MIDSHIP DETECTIVE AGENCY	DECKS 2 & 5, MID	9:00 AM - 10:00 PM
NEMO'S REEF	DECK 11, MID	9:00 AM - 7:00 PM
PORT ADVENTURES DESK	DECK 5, MID	7:30 AM - 11:00 AM
QUIET COVE POOL	DECK 11, FWD	6:00 AM - 12:00 MID
SATELLITE FALLS	DECK 13, FWD	6:00 AM - 8:00 PM
SENSES FITNESS CENTER	DECK 11, FWD	6:30 AM - 10:00 PM

### GENERAL INFORMATION

ARR-CADE	DECK 11, AFT	24 HOURS
ADVENTURES BY DISNEY	DECK 4, MID	3:00 PM - 5:00 PM 7:30 PM - 9:00 PM
DISNEY VACATION CLUB	DECK 4, MID	4:30 PM - 10:00 PM
FUTURE CRUISE SALES DESK	DECK 4, MID	5:00 PM - 6:00 PM 7:30 PM - 8:30 PM 9:30 PM - 10:30 PM
GUEST SERVICES	DECK 3, MID	24 HOURS
MEDICAL HEALTH CENTER	DECK 1, FWD	9:30 AM - 11:00 AM 4:30 PM - 7:00 PM
PORT & SHOPPING DESK	DECK 4, MID	7:30 PM - 8:30 PM
PRELUDES	DECK 3, FWD	5:45 PM - 6:30 PM 8:00 PM - 8:45 PM
SENSES SPA AND SALON	DECK 11, FWD	8:00 AM - 10:00 PM
SHUTTERS PHOTO GALLERY	DECK 4, MID	5:00 PM - 10:30 PM
SHUTTERS DIGITAL	DECK 4, MID	24 HOURS

### SHOPPING

BIBBIDI BOBBIDI BOUTIQUE	DECK 5, MID	9:00 AM - 9:00 PM
MICKEY'S MAINSAIL	DECK 3, FWD	4:30 PM - 11:00 PM
QUACKS	DECK 11, MID	
SEA TREASURES	DECK 3, FWD	4:30 PM - 11:00 PM
VISTA GALLERY	DECK 4, MID	7:00 PM - 10:00 PM
WHITECAPS	DECK 3, FWD	4:30 PM - 11:00 PM
WHOZITS & WHATZITS	DECK 11, MID	

## DINNER

Animator's Palate: Prince & Princess (Alcoholic)  
Enchanted Garden: Prince & Princess (Non Alcoholic)  
Princess Delight (Non Alcoholic)  
Royal Court: Prince & Princess (Non Alcoholic)  
Dining Times: 5:45pm & 8:15pm

Wednesdays: Stinky High: 80°F/27°C  
Thursdays: Purely Cloudy High: 85°F/31°C

## DINING & LOUNGES

### BREAKFAST

CABANAS CONTINENTAL	DECK 11, AFT	6:30 AM - 7:00 AM
CABANAS	DECK 11, AFT	7:00 AM - 11:00 AM
ROYAL COURT	DECK 3, MID	8:00 AM - 9:45 AM

### LUNCH

CABANAS	DECK 11, AFT	11:45 AM - 2:15 PM
FILMORE'S FAVORITES	DECK 11, MID	11:00 AM - 6:00 PM
LUGI'S PIZZA	DECK 11, MID	11:00 AM - 6:00 PM
ROYAL COURT	DECK 3, MID	12:00 PM - 1:30 PM
TOW MATE'S GRILL	DECK 11, MID	11:00 AM - 11:00 PM

### DINNER

ANIMATOR'S PALATE	DECK 3, AFT	5:45 PM & 8:15 PM
ENCHANTED GARDEN	DECK 2, MID	5:45 PM & 8:15 PM
ROYAL COURT	DECK 3, MID	5:45 PM & 8:15 PM
CABANAS TABLE SERVICE	DECK 11, AFT	6:30 PM - 8:30 PM
PALO (18+)	DECK 12, AFT	6:00 PM - 8:30 PM
REMY (18+)	DECK 12, AFT	6:00 PM - 8:30 PM

### LATE NIGHT SNACKS

LA PLAZZA (18+)	DECK 4, AFT	10:45 PM - 11:45 PM
LUGI'S PIZZA	DECK 11, MID	9:30 PM - 12:30 AM

### ADDED FEATURES

BEVERAGE STATION	DECK 11, MID	24 HOURS
EYE SCREAM	DECK 11, MID	11:00 AM - 11:00 PM
ROOM SERVICE	DIAL 0	24 HOURS

### ENTERTAINMENT - LOUNGES - BARS

Adults must be 21 and older to consume alcoholic beverages.

BON VOYAGE	DECK 3, MID	1:30 PM - 11:00 PM
COVE BAR (18+)	DECK 11, FWD	12:00 PM - 10:30 PM
COVE CAFE (18+)	DECK 11, FWD	7:00 AM - 12:00 MID
CURRENTS (18+)	DECK 13, FWD	10:00 AM - 11:00 PM
D LOUNGE	DECK 4, MID	SHOWTIMES
FROZONE TREATS	DECK 11, MID	11:00 AM - 10:00 PM
LA PLAZZA	DECK 4, AFT	4:00 PM - 12:00 MID
MERIDIAN (18+)	DECK 12, AFT	5:00 PM - 12:00 MID
O'GILL'S PUB	DECK 4, AFT	1:00 PM - 12:00 MID
Ooh La La (18+)	DECK 4, AFT	5:00 PM - 12:00 MID
OUTLOOK	DECK 14, MID	SUNSET TIMES
SKYLINE (18+)	DECK 4, AFT	5:00 PM - 12:00 MID
THE TUBE (18+)	DECK 4, AFT	10:00 PM - 2:00 AM
VISTA CAFE	DECK 4, MID	7:30 AM - 11:00 PM
WAVES	DECK 12, AFT	11:30 AM - 7:00 PM

Consumers who order raw or partially cooked, ready-to-eat food of animal origin, are hereby informed that the food is not sufficiently cooked to ensure its safety.



## IMPORTANT INFORMATION

Please check your tour tickets for meeting times and locations. Visit the Port Adventures Desk, Deck 5, Midship, for any questions.

All Ashore: Approx. 7:45 a.m.  
All Aboard: 4:00 p.m.

### SHIP'S AGENT IN ST. THOMAS

Virgin Port Services, 1001 Blackbeard's Hill,  
St. Thomas, USVI 00802  
Tel.: 340-775-1151, 305-608-1908

### IMPORTANT NUMBERS

Fire/Security: 7-3001  
Medical EMERGENCY: 7-3000  
Health Center: 7-1923