

# PERSONAL NAVIGATOR

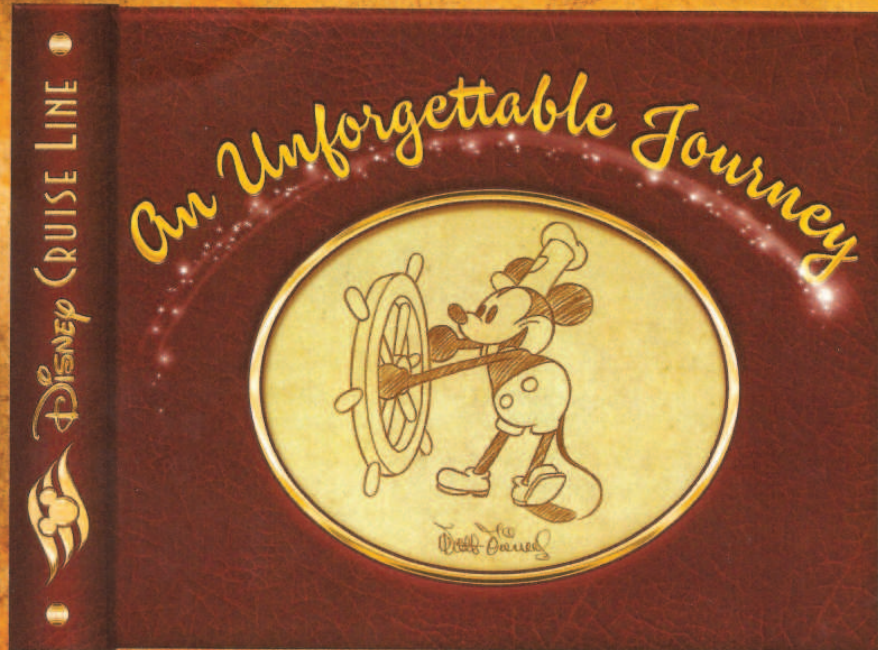


FRIDAY, AUGUST 17, 2012

Sunrise: 6:43 a.m. Sunset: 7:44 p.m.  
 Evening Attire: Cruise Casual  
 All Ashore: 9:45 a.m.  
 All Aboard: 5:00 p.m.

Friday: Partly Cloudy High: 88°F/31°C  
 Saturday: Cloudy High: 82°F/28°C

CASTAWAY CAY



Join us tonight as we celebrate our magical voyage, inspired by the words and wisdom of the man himself Walt Disney.

**WALT DISNEY THEATRE**  
 Decks 3 & 4 Forward  
 6:15 P.M. & 8:30 P.M.



Assistance available at the entrance to the Walt Disney Theatre 30 minutes prior to show time.

## Disney's Castaway Cay

Reserved exclusively for Guests on Disney Cruise Line Bahamian and Caribbean cruise vacations, Castaway Cay is Disney's private port-of-call paradise. On this island, enjoy tropical leisure activities, such as snorkeling, boating, swimming and sunbathing.

### Friendly Reminders

- You will need your Key To The World Card for all transactions on Disney's Castaway Cay except for the Post Office.
- For your convenience, beach towels are available as you leave the ship; please return them at the gangway at the end of your day.
- Serenity Bay is reserved for Guests 18 and older.
- A limited number of all-terrain wheelchairs across from Scuttle's Cove.
- Due to our commitment to the environment, we ask that seashells, coral and other natural treasures be left undisturbed at Disney's Castaway Cay for all to enjoy.

### Debark Talk Broadcast

Your Cruise Director, Brent presents important information including details regarding U.S. Customs and Border Protection procedures. Tune in to Channel 5 of your stateroom TV.

Please place your luggage outside your stateroom between 8:30 - 10:30 p.m.

Thank you in advance for completing your comment card.



**SEA YA' REAL SOON**

Mickey and Minnie, along with the rest of the Walt Disney Characters, invite you to join them in the ship's Atrium. You won't want to miss this very special farewell meet and greet.

Bring your cameras!  
**Lobby Atrium,  
 Deck 3, Midship,  
 10:15 p.m.**

## Don't Miss:

### Ship's Whistle

Will be played at 5:00 p.m. today as we set sail from Castaway Cay. The Disney Fantasy's whistle is able to perform not just the first musical line of "When You Wish Upon a Star" but also the second line of the song ("makes no difference who you are") plus several measures of "Yo Ho (A Pirate's Life for Me)," "It's a Small World," "Be Our Guest," "Hi Diddle Dee Dee (An Actor's Life for Me)" and - most appropriately - "A Dream is a Wish."

### runDisney: Castway Cay 5K

Meet in The Tube (12+), Deck 4, Aft - 9:30 a.m. Runners meet in The Tube, Deck 4, Aft, at 9:30 a.m. We will depart the ship at 9:45 a.m., and make our way to the Bike Rentals where the run will begin.

### Crab Races

Island Gazebo 1, - 11:45 a.m.  
 Island Gazebo 2, - 12:30 p.m.

Watch some local sea creatures make a break for the finish line.

### Family Dance Party

The Tube, Deck 4, Aft - 7:15 p.m. Join DJ Brandon and your Cruise Staff as we open our nightclub just for families.

### Visit The Future Cruise Desk Early Today

Please visit the Future Cruise Desk, Deck 4, Midship, as early as possible today. The last day of the cruise tends to get busy in the evening, and we want to be sure you have the opportunity to save 10% on your next cruise, receive up to a \$200 onboard credit, and pay a reduced deposit! Tune to Channel 8 for details.



## DINNER MENU

Animator's Palate: Sea Ya' Real Soon  
 Enchanted Garden: Sea Ya' Real Soon  
 Royal Court: Sea Ya' Real Soon

## DRINK OF THE DAY

Bahama Mama (Alcoholic)  
 Parrot Song (Non Alcoholic)

## IMPORTANT NUMBERS

Fire/Security: 7-3001  
 Medical Emergency: 7-3000  
 Health Center: 7-1923

# FAMILY ACTIVITY HIGHLIGHTS

## RUN DISNEY: CASTWAY CAY 5K

Meet in *The Tube, Deck 4, Aft* - 9:30 a.m.

Runners meet in *The Tube, Deck 4, Aft*, at 9:30 a.m. We will depart the ship at 9:45 a.m., and make our way to the Bike Rentals where the run will begin.

## ISLAND POWER WALK

Meet on the pier by the showers, - 9:45 a.m.

Join your Cruise Staff for a brisk walk around the island. Meet outside, on the pier by the showers at 9:45 a.m. Walk leaves promptly at 10:00 a.m.

## CRAB RACES

*Island Gazebo 1*, - 11:45 a.m.

*Island Gazebo 2*, - 12:30 p.m.

Watch some local sea creatures make a break for the finish line.

## DISNEY VACATION CLUB GROUP PREVIEW

*The Tube, Deck 4, Aft* - 4:30 p.m.

Want to learn more about taking magical vacations year after year? Stop by our interactive group presentation to find out more information from a Disney Vacation Club representative.

## JEWISH SABBATH

*Outlook, Deck 14, Midship* - 5:15 p.m.

A quiet space is reserved for those wishing to conduct their own service.

## FAMILY TALENT SHOW

*D Lounge, Deck 4, Midship* - 7:30 p.m.

Does your family have what it takes to make their performing dreams come true? Find out at the Disney Fantasy Family Talent Show - dare to show your family's flair!

## DISNEY TRIVIA

*D Lounge, Deck 4, Midship* - 9:45 p.m.

Navigate your way through another round of questions to test how much you really know about Disney.

## FAREWELL KARAOKE

*D Lounge, Deck 4, Midship* - 10:30 p.m.

Your final chance to take the stage, grab the mic and sing along to your favorite song.

# ADULT ACTIVITY HIGHLIGHTS

## SENSES SPA FITNESS CLASSES & SEMINARS

*Sunrise Stretch* - Senses Fitness Center - 7:00 a.m.

*Body Sculpt Boot Camp* (Nom. Fee) - Senses Fitness Center - 8:00 a.m.

*Yoga on the Beach* - Serenity Bay - 11:00 a.m.

*Fab Abs* - Senses Fitness Center - 5:00 p.m.



## TASTING CLASSES

*Beer Tasting* (21+) (Nom. Fee) - O'Gills Pub - 4:30 p.m.

Please make reservations for tastings at Guest Services for a nominal fee. Tasting Seminars are only for Guests 21 and Older.

CLUB  
18\*21

## BASKETBALL FREE THROW

*In Da Shade Game Pavilion*, - 1:00 p.m.

## FAREWELL EVENT

*O'Gills Pub, Deck 4, Aft* - 10:00 p.m.

## LIVE PIANO WITH TIM ADSHEAD

*Outlook, Deck 14, Midship* - 7:30 p.m. & 9:30 p.m.

Join Tim Adshead in *Outlook* as he plays live for your listening pleasure, including special sets: Tribute to Songwriters at 7:30 p.m. and Swingtime at 9:30 p.m.

## LIVE MUSIC WITH FINE WHINES

*La Piazza, Deck 4, Aft* - 7:30 p.m. & 9:45 p.m.

Join Fine Whines as they perform live for your listening pleasure in *La Piazza*.

## LIVE GUITAR WITH JOHN KEVISH

*O'Gills Pub, Deck 4, Aft* - 9:45 p.m. & 10:45 p.m.

Join John Kevish as he plays live guitar for your listening pleasure in *O'Gills Pub*, including a special Eagles Tribute set at 10:45 p.m.

## BATTLE OF THE SEXES

*The Tube, Deck 4, Aft* - 10:00 p.m.

Join us and find out who will dominate in this hilarious battle of the sexes.

## GOIN' UNDERGROUND WITH DJ BRANDON

*The Tube, Deck 4, Aft* - 11:15 p.m.

Grab onto the handrails as we take you underground with DJ Brandon.



# YOUTH ACTIVITY HIGHLIGHTS

## DINE & PLAY

A convenience for families dining at 8:15 p.m., our Youth Activities Counselors will be available at 9:15 p.m. at the entrance of Royal Court, Enchanted Garden and Animator's Palate dining rooms to bring registered children to join the fun in the Youth Activity areas.



Deck 5 Midship (7-1440)

(3-12 years old) 4:30 p.m. - 12:00 mid

## CRUISIN' WITH CRUSH

7:30 p.m.

Be sure to check out the Oceaneer Club to see Crush when he stops by!

## TOY STORY BOOT CAMP

8:45 p.m.

Join Corporal Green in our own version of boot camp as we learn how to have fun - The Toy Story way!



Deck 5 Midship (7-1445)

(3-12 years old) 4:00 p.m. - 12:00 mid

## STITCH'S ADVENTURE SQUAD

6:30 p.m.

Stitch, everyone's favorite alien, is making an appearance to share some of his mischievous games and activities.

## PIRATES OF THE CARIBBEAN: TIDES OF FORTUNE

8:15 p.m.

Inspired from the Pirates of the Caribbean saga, during this interactive computer game, cruisers in the Oceaneer Lab get a chance to sail the seven seas!



Deck 13 Midship (7-9743)

(11-14 years old) 4:30 p.m. - 12:00 mid

## DISNEY ANIMATION: PERSISTENCE OF VISION

6:00 p.m.

Go behind the scenes at Walt Disney Animation Studios and learn the principles that make animation work, and try your hand at creating your own easy animation demonstration in this fun and fascinating enrichment program.

## THAT'S HILARIOUS

9:30 p.m.

Ever wanted to show off your comedy skills? Then be a part of the cast for the crazy improv show "That's Hilarious" and put on a live show for your family and friends.



Entrance on Deck 4 Forward (7-9418)

(14-17 years old) 4:30 p.m. - 1:00 a.m.

## DREAM NOW! SEA HOW! - ANIMAL, SCIENCE AND ENVIRONMENT

7:30 p.m.

Ever wonder how man and animal connect and live in harmony? In an interactive session you will dive into their background, education, mentors, and the dream that lead them on their path toward working with animals.

## ZOMBIFIED PREMIER PARTY

11:00 p.m.

Join the producer and Jessie to watch a preview of the final version of the film and join us for a celebration party.

# BUENA VISTA THEATRE

## Today's Movies



10:00 a.m.

Run Time: 2 hr 22 min

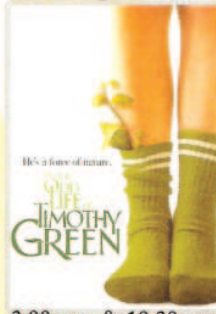
Rating: PG-13



1:00 p.m.

Run Time: 1 hr 18 min

Rating: G



3:00 p.m. & 10:30 p.m.

Run Time: 1 hr 40 min

Rating: PG



5:30 p.m. & 8:30 p.m.

Run Time: 1 hr 41 min

Rating: PG



Does your family have what it takes to make their performing dreams come true? Find out at the Disney Fantasy Family Talent Show - dare to show your family's flair!

**D Lounge,**  
**Deck 4, Midship,**  
**7:30 p.m.**



## ADULT CABARET

Featuring the  
Comedy & Hypnosis of  
Ricky Kalmon, as he  
entertains you in this  
adult exclusive show.  
**The Tube (18+),**  
**Deck 4, Aft,**  
**10:30 p.m.**

## YOUTH ACTIVITIES OPEN HOUSE

Open House is an opportunity for all to come and participate in a variety of exciting activities and free time in It's a Small World Nursery, Oceaneer Club, Lab, Edge and Vibe throughout the cruise. During these times secured programming will still be offered in the other venue for those looking to check their children into care.

Oceaneer Club: 9:30 a.m. - 12:00 p.m. Oceaneer Lab: 12:00 p.m. - 4:00 p.m.

# MORE TO ENJOY WHILE ONBOARD

THE MUPPETS

There's a Muppet mystery onboard, and Kermit and Pepe need YOU to solve it! Search the ship for clues and use our special detective "badge" to catch the culprit!



**Decks 2 & 5, Midship,**  
9:00 a.m. - 10:00 p.m.



**SENSES**  
SPA & SALON  
**RECOVERY PACKAGE**

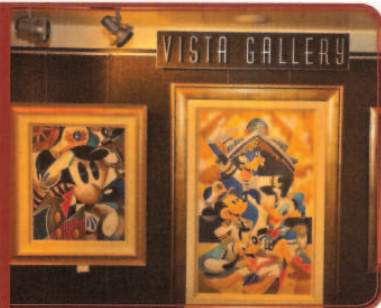
- 20 minute Back, Neck and Shoulder Massage
- 20 minute Scalp Massage
- 20 minute Foot & Ankle Massage

60 minutes total \$99

## VISTA GALLERY

Your last opportunity to purchase your Disney art. Shipping available. Stop by the Vista Gallery, Deck 4, Midship, to find out more.

6:00 p.m. - 10:00 p.m.



**Shutters**

**GET THE PICTURE**

This is your last chance to purchase your photo CD and prints. Order all your stateroom photos on a CD for \$349.95 and we will include all the prints for ONLY \$50 extra!

All your photos will be available in your stateroom folder and you can view it on our interactive photo kiosks in Shutters Digital on Deck, 4, Midship. Visit Shutters to learn more. Conditions apply

*\*Please note that photos are available for viewing on our interactive photo kiosks approximately five hours after being taken and are only available for purchase during this cruise.*

## Disney Cruise Line PORT ADVENTURES

Welcome to Disney's Island Paradise Castaway Cay. Today is the day to relax in an inner tube, snorkel in the Caribbean blue, get up-close and personal to real life stingrays or fly high in the sky on a parasail excursion during a breathtaking aerial adventure. Visit Marge's Barges or one of the rental locations and our friendly team will assist in making any last minute bookings.

### PORT ADVENTURES MEETING TIMES AND LOCATIONS

As per ticket	Castaway Ray's Stingray Adventure	Gil's Fins and Boats
As per ticket	Castaway Cay Bottom Fishing	Marge's Barges
As per ticket	Glass Bottom Boat	Marge's Barges
As per ticket	Nature Walk and Kayaking	As per ticket
As per ticket	Parasailing	Marge's Barges
As per ticket	Sea Horse Catamaran Snorkel Adventure	Marge's Barges
9:30 a.m.	Teen Wild Side	Vibe
As per ticket	Watercraft Ski Adventure	Boat Beach

### CASTAWAY CAY ISLAND RENTALS

Bicycles	9:30 a.m. - 4:00 p.m.	Near Cookies Too
Boats	9:30 a.m. - 4:00 p.m.	Boat Beach
Snorkeling Gear	9:30 a.m. - 3:30 p.m.	Gil's Fins and Boats / Flippers and Floats
Float	9:30 a.m. - 3:30 p.m.	Gil's Fins and Boats / Flippers and Floats
Getaway Package	9:30 a.m. - 3:30 p.m.	Gil's Fins and Boats / Flippers and Floats

Reservations can be made on the island at each rental location. Castaway Ray's walk up reservations can be made at Gil's Fins and Boats on Family Beach.

## SHOPPING

### SHOPPING IN PARADISE

Disney's Castaway Cay has two shopping locations with exclusive Disney's Castaway Cay merchandise. This is your chance to take home a memory of our private Island.

### SPECIAL VALUE

Stop by Mickey's Mainsail and Whitecaps, Deck 3, Forward, to view our selection of special value Disney Cruise Line merchandise. Items available include DCL ceramic mugs, t-shirts, tote bags and much more!

### FANTASY LOGO

Bring home a memory of your first sailing on the Disney Fantasy. Choose from t-shirts, hats, sweatshirts, mugs and scrapbooks.

### LAST CHANCE - SOPHIA FIORI DIAMOND BLOW OUT SALE!

This is your last chance to commemorate your Disney Cruise Line vacation with Sophia Fiori Caribbean blue diamonds. Enjoy last chance savings up to 50% off your purchase. Free jewelry gift with purchase. Sophia Fiori diamonds are not available back home, so this is your final opportunity to choose from all price points, from \$500 up to extravagant red carpet designs. Whitecaps.

### SWAROVSKI

Crystal glass from Austria that exceeds all others in terms of quality and elegance. Boxed jewelry pieces and Disney figurines now available in Whitecaps.

### BIBBIDI BOBBIDI BOUTIQUE

Be a part of a new world with an exclusive Under The Sea makeover. Shimmer like a mermaid with your two piece Ariel swim suit. Makeover includes colored sun block, color changing flower necklace, hair clip and nail polish.

Due to port regulations, when the ship is docked, the stores will remain closed.

## IMPORTANT INFORMATION

### Security Notice

All Guests (including children) who wish to disembark the ship are required to present their Key to the World card at the gangway. A photo ID is also required for those Guests who are 18 years of age or older. Guests under the age of 18 are required to have a Parent, Guardian or other responsible adult sign an authorization form at the time it is given out if they wish to go ashore unaccompanied. Authorization forms are available at the gangways and Guest Services.

### Please Note:

Please remember to use plenty of sunscreen and mosquito repellent when venturing ashore.

### Cold and Flu Reminder

Please wash hands frequently and thoroughly, particularly before meals. Contact the Health Center by dialing 7-1923, should anyone in your party become ill.

### Corridor Quiet Hours

As a courtesy to all our Guests, please recognize quiet hallway hours from 10:00 p.m. til 8:00 a.m.

### Inclement Weather

For the safety of all Guests, outdoor events may be changed due to unforeseen weather conditions.

### Environmental Message

With Disney's commitment to the Environment, please refrain from throwing anything over the Ship's side. Thank you!

### No Reserved Seats Policy

As a courtesy to all our Guests, we kindly advise that the saving of seats is not permitted in the Walt Disney Theatre, and the saving of the sun loungers is not permitted on Deck 11, 12, and 13. Items left unattended will be returned to lost and found at Guest Services, Deck 3 Midship.

### Smoking

For the comfort of our guests the following areas are designated as Smoking areas: - Promenade Deck (Deck 4), smoking is permitted Port Side, Aft only from 6:00 p.m. to 6:00 a.m.

- Currents - Deck 13, Forward, Port Side.

- Meridian Bar - Deck 12, Aft, Port Side, outside.

- Smoking is permitted on stateroom verandahs. Smoking is prohibited inside all guest staterooms. Guests found smoking in their staterooms will be charged a \$250 stateroom recovery fee.


### Walt Disney Theatre


Theatrical performances may use artificial fog, strobe lights, pyrotechnics and other special effects. For the safety of our performers and the comfort of those around you, the use of any photography, video recording device or any electronic equipment is prohibited.

### Verandah Safety

Please do not leave any combustible materials on your balcony when not present in your stateroom for safety reasons.

Morning	8:30	8:45	9:00	9:15	9:30	9:45	10:00	10:15	10:30	10:45	11:00	11:15	11:30	11:45	12:00	12:15	12:30	12:45	1:00	1:15	1:30			
FUNNEL VISION	Snow White (G) Funnel Vision			Mary Poppins (G) Funnel Vision																				
MOVIES	The Avengers <b>DOLBY 3D</b> (PG-13) Buena Vista Theatre											Disney Nature: Chimpanzee (G) Buena Vista Theatre > 2:18 p.m.												
CHARACTER	Captain Jack Pathway		Chip & Dale Post Office		Minnie Scuttles		Donald Post Office		Cpt. Jack Pathway		Chip & Dale Post Office		Pluto Scuttles		Goofy Gazebo 2		Mickey Gazebo 1							
FUN FOR ALLAGES	runDisney: Castway Cay 5K Meet in The Tube - Departs at 9:45 a.m.				Beach Volleyball Sports Beach				Crab Races Gazebo 1				Island Vibes with Guest DJ Livitup Island Gazebo 1				Fun In The Sun Gazebo 1							
	Island Power Walk Meet on the pier - Departs at 10:00 a.m.								Basketball Free Throw In Da Shade Game Pavilion				Crab Races Gazebo 2											
	Open House Disney's Oceaneer Club								Open House Disney's Oceaneer Lab															
ADULTS	Friends of Bill W. Outlook											Club 18*21 - Basketball Free Throw In Da Shade Game Pavilion												
												Yoga on the Beach Serenity Bay												
VIBE					The Wild Side				Meet At Teen Hideout				Beach Volleyball				Sand Soccer				Lunch at Cookies Too			
EDGE					Meet At Marge's Barges				Hangin' at In Da Shade				Sand Soccer				Lunch at Cookies Too				Pelican Plunge			
SCUTTLES COVE					Whale Dig				Beach Volleyball								Youth Lunch		Make a Visor		Vacation Crafts			
					Water Relays				Whale Dig										Sand Soccer					
OCEANEER LAB												Open House												
OCEANEER CLUB	Open House																							
OUT AND ABOUT												Family Whale Dig Monstro Point												

Afternoon	1:45	2:00	2:15	2:30	2:45	3:00	3:15	3:30	3:45	4:00	4:15	4:30	4:45	5:00	5:15	5:30	5:45	6:00	6:15	6:30	6:45	
FUNNEL VISION	A Bug's Life (G) Funnel Vision			Aladdin (G) Funnel Vision							The Little Mermaid (G) Funnel Vision											
MOVIES	The Odd Life of Timothy Green (PG) Buena Vista Theatre											Brave <b>DOLBY 3D</b> (PG) Buena Vista Theatre > 7:11 p.m.										
CHARACTER	Daisy Gangway		Chip & Dale Gangway		Hook & Snee Gangway				Donald Dk 4, Mid		Pinocchio Preludes											
FUN FOR ALLAGES	Open House Disney's Oceaneer Lab								Disney Vacation Club Group Preview The Tube				Jewish Sabbath Outlook									
	Fun In The Sun Gazebo 1		Fun In The Sun with John Kevish Island Gazebo 1		Live Music with Andrea and Rafaella Deck 12, Forward				Live Music with Andrea and Rafaella Deck 12, Forward		Live Music with Northern Lights Lobby Atrium		Live Music with Fine Whines La Piazza									
												Beer Tasting (21+) O'Gills Pub (Nom. Fee)				Fab Abs Senses Fitness Center						
ADULTS												Beer Tasting (21+) O'Gills Pub (Nom. Fee)										
												Fab Abs Senses Fitness Center										
VIBE	Ping Pong								Dream Now! Sea Howl - Animal, Science and Environment								XBox® Kinect™ - Just Dance Challenge					
EDGE	Pelican Plunge		Meet At Teen Hideout		Pool Party				Chillin' in Edge		Mini Golf		Disney Animation: Persistence of Vision				Scavenger Hunt					
SCUTTLES COVE	Vacation Crafts		Caribbean Beach Party																			
OCEANEER LAB	Open House								Chillin' in the Lab								Parachute Games				Adventure Squad	
																	Youth Dinner					
OCEANEER CLUB									Chillin' in the Club								Wii Challenge					
OUT AND ABOUT												Magic Playfloor										

Evening	7:00	7:15	7:30	7:45	8:00	8:15	8:30	8:45	9:00	9:15	9:30	9:45	10:00	10:15	10:30	10:45	11:00	11:15	11:30	11:45	12:00			
FUNNEL VISION	Toy Story 3 (G) Funnel Vision							Race to Witch Mountain (PG) Funnel Vision																
MOVIES	Brave <b>DOLBY 3D</b> (PG) Buena Vista Theatre											The Odd Life of Timothy Green (PG) Buena Vista Theatre > 12:10 a.m.												
CHARACTER	Goofy Preludes		Minnie Dk 4, Mid		Pluto Preludes																			
FUN FOR ALLAGES	Family Talent Show D Lounge								Disney Trivia D Lounge								Live Music Lobby Atrium							
	Family Dance Party The Tube								Live Music Lobby Atrium															
	Live Music Lobby Atrium		Live Music with Andrea and Rafaella Deck 12, Forward																					
ADULTS	Piano Tribute to Great Songwriters Outlook								Live Music La Piazza		Battle of the Sexes The Tube		Adult Cabaret: Ricky Kalmon The Tube - Hypnosis		Goin' Underground with DJ Brandon The Tube									
	Live Music with Fine Whines La Piazza								Swingtime Outlook		Live Guitar O'Gills Pub		18*21 Farewell O'Gills Pub		Eagles Tribute with John Kevish O'Gills Pub									
VIBE	Disney Animation: Persistence of Vision				Smoothie Hour				Chillin' in Vibe				Mix and Match				Zombified							
EDGE	Scavenger Hunt		Karaoke		Create A Memory Book				GAGA Ball		That's Hilarious				Know Your Counselor?		Dance Party							
OCEANEER LAB			Magic Show		Pirates of the Caribbean: Tides of Fortune		4 Corners		Super Sloppy Science - Flubber		GAGA Ball		Magic Playfloor		Dance Party									
					Create A Mask				Create a Postcard								Pictionary							
OCEANEER CLUB	Create a Postcard								Parachute Games		Toy Story Boot Camp								Movie Time					
			Cruisin' with Crush																					
OUT AND ABOUT	Mini Golf Goofy Golf																							

Symbol for activities that will be repeated during the cruise  
 FOLD →  
 FOLD ←  
 FOLD ↓  
 FOLD ↑  
 IN THE SPOTLIGHT SERIES  
 GOOSE IT! SERIES  
 JUMP! UP! SERIES  
 CREATE & ROTATE SERIES  
 CLUBHOUSE SERIES  
 STORYBOOK SERIES

FRIDAY, AUGUST 17, 2012 - CASTAWAY CAY

# BUENA VISTA THEATRE



10:00 a.m.  
Run Time:  
2 hr 22 min  
Rating: PG-13

1:00 p.m.  
Run Time:  
1 hr 18 min  
Rating: G

3:00 p.m. & 10:30 p.m.  
Run Time:  
1 hr 40 min  
Rating: PG



## GOOFY'S SPORTS Digital Simulators

**Sports Simulator**  
(Basketball, Baseball, Hockey, or Soccer)  
\$12 / half hr, \$20 / hr.  
Reservations can be made at the Port Adventures Desk, Deck 5, Midship or at the Simulators, Deck 13, Aft.

## Character Appearances

**CAPTAIN JACK SPARROW PLUTO**  
Island Pathway  
9:30 a.m. & 10:45 a.m.

**DONALD DUCK**  
Post Office  
9:30 a.m. & 10:30 a.m.  
Deck 4, Balcony - 5:30 p.m.

**GOOFY**  
Mt. Rustmore - 9:45 a.m.  
Scuttle's Cove - 10:45 a.m.  
Island Gazebo 2 - 12:00 p.m.  
Preludes - 7:15 p.m.

**MICKEY MOUSE**  
Scuttle's Cove - 9:45 a.m.  
Mt. Rustmore - 10:45 a.m.  
Island Gazebo 1 - 12:15 p.m.  
Deck 4, Balcony - 8:00 p.m.

**CHIP & DALE**  
Post Office  
10:00 a.m. & 11:00 a.m.  
Gangway - 3:00 p.m.

**Don't forget your Camera to capture those Magical Moments!**  
For details of daily Disney character appearances, refer to the character line in your Navigator Grid.

**CAPTAIN JACK SPARROW MR SREE**  
Gangway - 3:30 p.m.

**PINOCCHIO**  
Preludes - 5:45 p.m.

## YOUTH ACTIVITIES THEMED EXPERIENCES

**CLUBHOUSE SERIES**  
focuses on movement and features content which appeals to younger children.

**JUMP UP! SERIES**  
includes large ground games & movement-oriented activities.

**IN THE SPOTLIGHT SERIES**  
focuses on children's stage and enthusiasm.

**CREATE & INVENT SERIES**  
will have a tactile focus allowing children with problem/solutions-based activities.

**SOAVE IT! SERIES**  
are less active, but will challenge children with problem/solutions-based activities.

## SHIP DIRECTORY

**YOUTH ACTIVITIES**

DISNEY'S OCEANEER CLUB DECK 5, Mid 4:30 PM - 12:00 MID  
DISNEY'S OCEANEER LAB DECK 5, Mid 4:00 PM - 12:00 MID  
EDGE DECK 13, Mid 4:30 PM - 12:00 MID  
VIBE DECK 4, FWD 4:30 PM - 1:00 AM  
IT'S A SMALL WORLD NURSERY DECK 5, Mid 9:00 AM - 11:00 PM

**RECREATION**

AQUADUCK DECK 12, Mid 1:00 PM - 10:00 PM  
AQUALAB DECK 12, Aft 1:00 PM - 7:00 PM  
DONALD'S POOL DECK 11, Mid 6:00 AM - 12:00 MID  
GOLF/SPORTS SIMULATORS DECK 13, Aft 1:00 PM - 6:00 PM  
GOOFY GOLF\* DECK 13, Aft 8:00 AM - 10:00 PM  
GOOFY'S SPORTS DECK DECK 13, Aft 8:00 AM - 6:00 PM  
MARGE'S BARGES CASTAWAY CAY 9:00 AM - 3:30 PM  
MICKEY'S POOL DECK 11, Mid 6:00 AM - 11:00 PM  
MICKEY'S SLIDE DECK 11, Mid 10:00 AM - 6:00 PM  
MIDSHIP DETECTIVE AGENCY DECKS 2 & 5, Mid 9:00 AM - 10:00 PM  
NEIMO'S REEF DECK 11, Mid 10:00 AM - 7:00 PM  
PORT ADVENTURES DESK DECK 5, Mid  
QUIET COVE POOL DECK 11, FWD 6:00 AM - 12:00 MID  
SATELLITE FALLS DECK 13, FWD 6:00 AM - 8:00 PM  
SENSES FITNESS CENTER DECK 11, FWD 6:30 AM - 10:00 PM

**GENERAL INFORMATION**

ARR-CADE DECK 11, Aft 24 HOURS  
ADVENTURES BY DISNEY DECK 4, Mid 4:00 PM - 6:00 PM  
DISNEY VACATION CLUB DECK 4, Mid 6:00 PM - 10:00 PM  
FUTURE CRUISE SALES DESK DECK 4, Mid 4:00 PM - 6:30 PM  
7:30 PM - 10:00 PM  
GUEST SERVICES DECK 3, Mid 24 HOURS  
MEDICAL HEALTH CENTER DECK 1, FWD 9:30 AM - 11:00 AM  
4:30 PM - 7:00 PM  
PORT & SHOPPING DESK DECK 4, Mid  
PRELUDES DECK 3, FWD 5:45 PM - 6:30 PM  
8:00 PM - 8:45 PM  
SENSES SPA AND SALON DECK 11, FWD 8:00 AM - 10:00 PM  
SHUTTERS PHOTO GALLERY DECK 4, Mid 3:30 PM - 11:30 PM  
SHUTTERS DIGITAL DECK 4, Mid 12:00 MID - 11:00 PM

**SHOPPING**

BIBBIDI BOBBIDI BOUTIQUE DECK 5, Mid 9:00 AM - 9:00 PM  
MICKEY'S MAINSAIL DECK 3, FWD 5:30 PM - 11:00 PM  
QUACKS DECK 11, Mid  
SEA TREASURES DECK 3, FWD 5:30 PM - 11:00 PM  
VISTA GALLERY DECK 4, Mid 6:00 PM - 10:00 PM  
WHITECAPS DECK 3, FWD 5:30 PM - 11:00 PM  
WHOZITIS & WHATZITIS DECK 11, Mid

**DINNER MENU**  
Bahama Mama (Alcoholic)  
Parrot Song (Non-Alcoholic)  
Animators' Palate, Sea Ya! Real Soon, Enchanted Garden, Sea Ya! Real Soon, Royal Court, Sea Ya! Real Soon  
Dining Times: 5:45pm & 8:15pm

**DRINK FORECAST**  
Friday: Partly Cloudy  
High: 88°F/31°C  
Saturday: Cloudy  
High: 82°F/28°C

**Evening Attire: Cruise Casual**

## DINING & LOUNGES

**BREAKFAST**

CABANAS CONTINENTAL DECK 11, Aft 7:00 AM - 7:30 AM  
CABANAS DECK 11, Aft 7:30 AM - 10:45 AM  
ENCHANTED GARDEN DECK 2, Mid 8:30 AM - 10:30 AM  
ROYAL COURT DECK 3, Mid 8:00 AM - 9:30 AM

**LUNCH**

CABANAS DECK 11, Aft 12:00 PM - 1:30 PM  
COOKIES CASTAWAY CAY 11:30 AM - 2:00 PM  
COOKIES TOO CASTAWAY CAY 11:30 AM - 2:00 PM  
FILLMORE'S FAVORITES DECK 11, Mid 12:00 PM - 6:00 PM  
LUIGI'S PIZZA DECK 11, Mid 12:00 PM - 6:00 PM  
TOW MATE'S GRILL DECK 11, Mid 12:00 PM - 10:00 PM

**DINNER**

ANIMATOR'S PALATE DECK 3, Aft 5:45 PM & 8:15 PM  
ENCHANTED GARDEN DECK 2, Mid 5:45 PM & 8:15 PM  
ROYAL COURT DECK 3, Mid 5:45 PM & 8:15 PM  
PALO (18+) (Reservations Req. & Now. Fee Applies) DECK 12, Aft 6:00 PM - 8:30 PM  
REMY (18+) (Reservations Req. & Now. Fee Applies) DECK 12, Aft 6:00 PM - 8:30 PM

**LATE NIGHT SNACKS**

LA PIAZZA (18+) DECK 4, Aft 10:45 PM - 11:45 PM  
LUIGI'S PIZZA DECK 11, Mid 9:30 PM - 12:00 MID

**ADDED FEATURES**

BEVERAGE STATION DECK 11, Mid 24 HOURS  
EYE SCREAM DECK 11, Mid 11:00 AM - 11:00 PM  
ROOM SERVICE DIAL O CLOSING AT 1:30 A.M.

**ENTERTAINMENT - LOUNGES - BARS**

Adults must be 21 and older to consume alcoholic beverages.

BON VOYAGE DECK 3, Mid 3:00 PM - 11:00 PM  
COVE BAR (18+) DECK 11, FWD 12:00 PM - 10:00 PM  
COVE CAFE (18+) DECK 11, FWD 7:00 AM - 12:00 MID  
CURRENTS (18+) DECK 13, FWD 1:00 PM - 11:00 PM  
D LOUNGE DECK 4, Mid SHOWTIMES  
FROZONE TREATS DECK 11, Mid 11:00 AM - 10:30 PM  
LA PIAZZA DECK 4, Aft 4:00 PM - 12:00 MID  
MERIDIAN (18+) DECK 12, Aft 5:00 PM - 12:30 AM  
O'GILLS PUB DECK 4, Aft 3:00 PM - 12:00 MID  
OOH LA LA (18+) DECK 4, Aft 5:00 PM - 12:00 MID  
OUTLOOK DECK 14, Mid SUNSET TIMES  
SKYLINE (18+) DECK 4, Aft 5:00 PM - 12:00 MID  
THE TUBE (18+) DECK 4, Aft 10:00 PM - 1:00 AM  
VISTA CAFE DECK 4, Mid 7:30 AM - 11:00 PM  
WAVES DECK 12, Aft 1:00 PM - 8:00 PM

**CASTAWAY CAY BARS**

CONCHED OUT BAR CASTAWAY CAY 9:00 AM - 4:00 PM  
CASTAWAY AIR BAR CASTAWAY CAY 9:00 AM - 3:30 PM  
HEADS UP BAR CASTAWAY CAY 9:00 AM - 3:30 PM  
SAND BAR CASTAWAY CAY 9:00 AM - 4:00 PM

Consumers who order raw or partially cooked, ready-to-eat food of animal origin, are hereby informed that the food is not sufficiently cooked to ensure its safety.

## IMPORTANT NUMBERS

Fire/Security: 7-3001  
Medical EMERGENCY: 7-3000  
Health Center: 7-1923

All Ashore: Approx. 9:45 a.m.  
All Aboard: 5:00 p.m.